

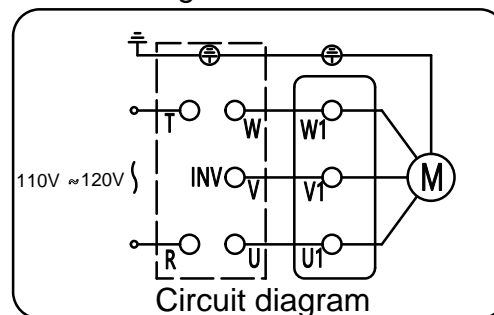
### Nameplate :

PERMANENT MAGNET FREQUENCY CONVERSION MOVABLE FAN							
Model	SMCT-1.5	Controller	Voltage	PH 120V	Model	WZ-1985-32	
Type	1.5 m		Current	10A	Voltage	80 V	
Power	0.75 kW	Controller	Hz	60 Hz	Current	6.5A	
R.P.M	420 r/min	Work method	S1		Hz	112Hz	
Airflow	5500cm³/h	Net weight	93 kg		INSULATION CLASS	H	
Date		IP	IP 55		NO		


### Notes :

1. The fan should be placed horizontally; otherwise, it is prone to tipping over.
2. Before operating the fan, make sure the moving wheels are in the braking position.
3. When the fan is running, make sure no foreign objects are sucked into the intake port.
4. When stopping the fan operation, first press the STOP button, wait until the fan stops, and then cut off the power supply. Do not cut off the power supply directly.

### Circuit diagram :



Fan name	PM Variable-Frequency Movable fan
Model	SMCT-1.5
Blade Diameter	150cm
Rated voltage	120v
Frequency	60Hz
Rated power	750W
Rated current	10A
MAX Speed (r/min)	420
Air volume (m³/h)	55000
Noise (dBA)	39
Capacitor (μF/450)	-
Rotation direction	Windward side, clockwise direction
Insulation class	H
Motor protection	-
Protection level	IP55
Energy efficiency rating	1
Work method	S1
Suitable environmental temperature	-10°C~+50°C
Installation method	Horizontal installation
Power cord	3×1.5mm²×5m Configuration plug
Certification mark	CQC CE
Net weight / Gross weight (kg)	93/139
Packaging size	38cm×166cm×176cm

						0.75kw-420r/min				
									SMCT-1.5	
									Movable Fan	