

Fan name	PM Variable-Frequency Movable fan
Model	SMC-1.5
Blade Diameter	150cm
Rated voltage	120v
Frequency	60Hz
Rated power	750W
Rated current	10A
MAX Speed (r/min)	420
Air volume (m³/h)	55000
Noise (dBA)	39
Capacitor (μF/450)	-
Rotation direction	Windward side, clockwise direction
Insulation class	H
Motor protection	-
Protection level	IP55
Energy efficiency rating	1
Work method	S1
Suitable environmental temperature	-10℃~+50℃
Installation method	Horizontal installation
Power cord	3×1.5mm²×5m Configuration plug
Certification mark	CQC CE
Net weight / Gross weight (kg)	93/139
Packaging size	38cm×166cm×176cm

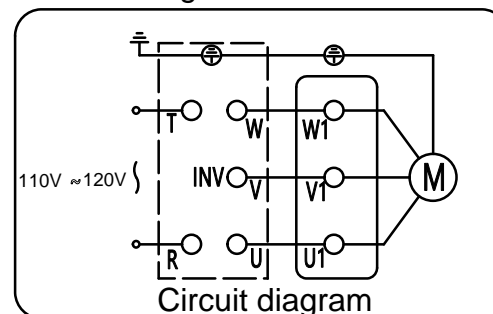
Nameplate :


PERMANENT MAGNET FREQUENCY CONVERSION MOVABLE FAN					
Model	SMC-1.5	Voltage	1PH 120V	Model	WZ-198S-32
Type	1.5 m	Current	10A	Voltage	80 V
Power	0.75 kW	Hz	60 Hz	Current	6.5A
R.P.M	420 r/min	Work method	S1	Hz	112Hz
Airflow	5500cm <sup>3</sup> /h	Net weight	93 kg	INSULATION CLASS	
				H	
Date	IP	IP 55	NO		

Notes :

1. The fan should be placed horizontally; otherwise, it is prone to tipping over.
2. Before operating the fan, make sure the moving wheels are in the braking position.
3. When the fan is running, make sure no foreign objects are sucked into the intake port.
4. When stopping the fan operation, first press the STOP button, wait until the fan stops, and then cut off the power supply. Do not cut off the power supply directly.

Circuit diagram :



						0.75kw-420r/min	 <b>STEALTH</b> <small>BY ACIQ</small>	
							SMC-1.5 Movable Fan	