



# Submittal Data Sheet

Indoor Unit Model#: ACiQ-24-ACL-B

Outdoor Unit Model#: ACiQ-24-EHPD

## 24K EVAPORATOR A-COIL & 24K STD. HEAT PUMP CONDENSER

Location:	Approval:
Engineer:	Date:
Submitted to:	Construction:
Submitted by:	Unit #:
Reference:	Drawing #:

System Product Code: 810175552712  
A-Coil Product Code: 810175552637  
Outdoor Unit Product Code: 810175550398



### INDOOR UNIT SPECIFICATION

Dimension (W×D×H)	inch	17-1/2 x 21 x 18
	mm	445 x 533 x 457
Package (W×D×H)	inch	20-1/2 x 26-1/8 x 20-7/8
	mm	520 x 665 x 530
Net/Gross Weight	lbs	42 / 50
	kg	19 / 22.5

### OUTDOOR UNIT SPECIFICATIONS

Compressor Type		ROTARY
Compressor Model		KTM240D46UKT2
Refrigerant		R454B
Refrigerant Oil Charge (mL)		620
Refrigerant Oil		VG74
Outdoor Air Flow (Max) (CFM)		1,766
Outdoor Noise Level (dBA)		60
Dimension (W×D×H)	inch	35 x 13-1/2 x 26-1/2
	mm	890 x 342 x 673
Package (W×D×H)	inch	39-1/8 x 15-5/8 x 29-1/8
	mm	995 x 398 x 740
Net/Gross Weight	lbs	102 / 109
	kg	46.4 / 49.5

### EFFICIENCY RATINGS

Cooling		Heating	
SEER2	16	HSPF2-4	9.5
EER2	10	COP	3.2

### COOLING PERFORMANCE

Cooling (Btu/hr)	
Rated Capacity	24,000
Min/Max Capacity	7,900~27,600
Moisture Removal (L/h)	2.89
Standard Operating Range (°F/°C)	-13~122 (-25~50)
Rated Cooling Conditions:	Indoor: 80°F DB/67°F WB
	Outdoor: 95°F DB/75°F WB

### HEATING PERFORMANCE

Heating (Btu/hr)	
1. @ 47°F Rated	25,000
1. @ 47°F Min/Max Capacity	6,500~30,000
2. @ 17°F Rated	19,700
3. @ 5°F Rated: Capacity / COP	21,000 / 1.8
3. @ 5°F Max. Capacity	21,000
Standard Operating Range (°F/°C)	-13~75 (-25~24)
1. Rated Heating Conditions:	Indoor: 70°F DB/60°F WB
	Outdoor: 47°F DB/43°F WB
2. Rated Heating Conditions:	Indoor: 70°F DB/60°F WB
	Outdoor: 17°F DB/15°F WB
3. Heating Conditions*	Indoor: 70°F DB/60°F WB
	Outdoor: 5°F DB/5°F WB

\*Compressor Operating at Max. Frequency

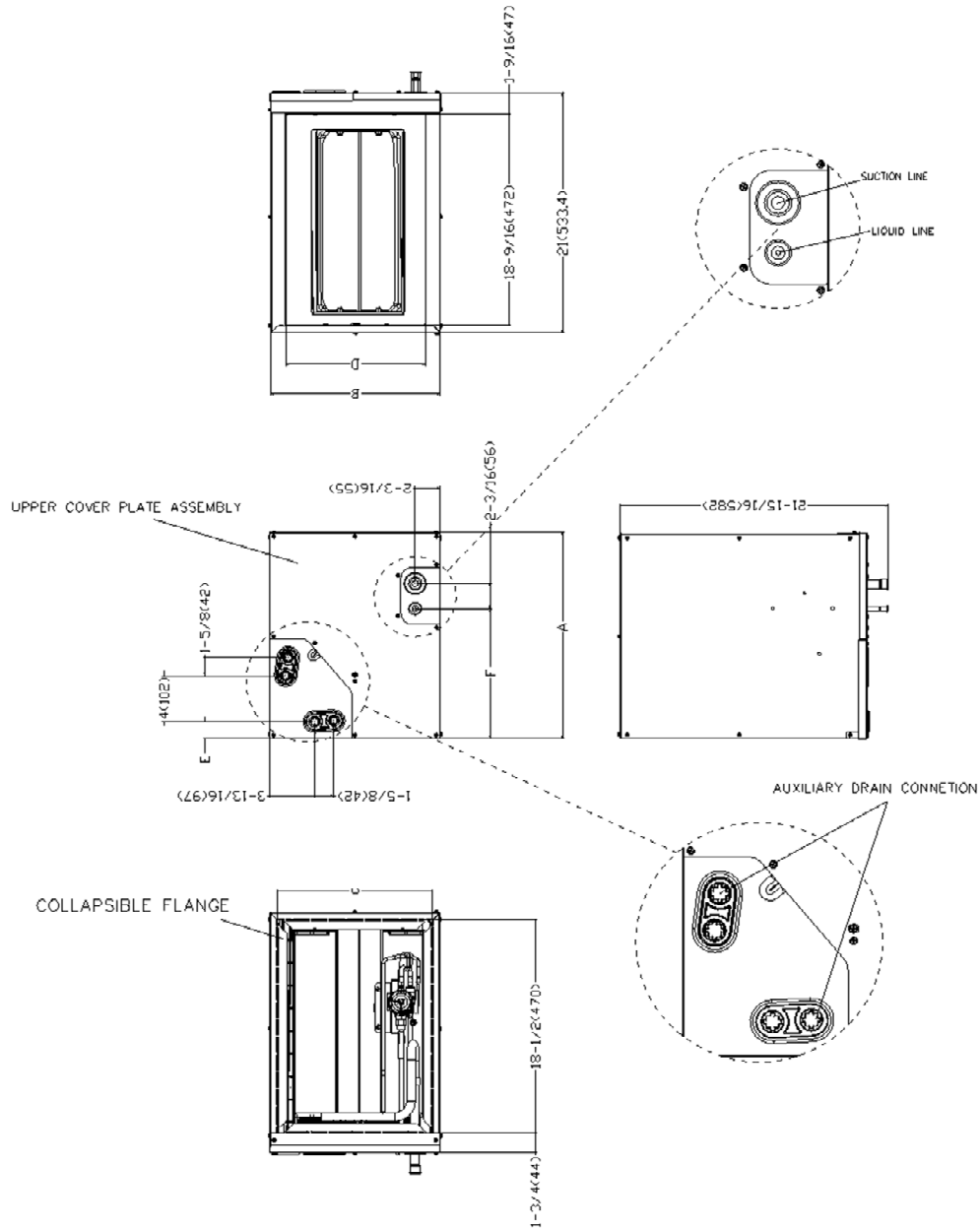
### ELECTRICAL SPECIFICATIONS

Indoor Power Supply	24V, 60Hz, 1Ph
Indoor MCA 115V/(208/230V)	N/A
Indoor MOP	N/A
Outdoor Power Supply	208/230, 60Hz, 1Ph
Outdoor MCA	19.0
Outdoor MOP	20.0
Communication Wiring	AWG 20/2
Compressor RLA	14
Outdoor Fan Motor RLA	1
Outdoor Fan Motor W	80
Indoor Fan Motor RLA	N/A
Indoor Fan Motor W	N/A
System Power Input @ Cooling (W)	2,400 (680 ~ 2,890)
System Power Input @ Heating (W)	2,290 (330 ~ 2,900)
MCA: Min. circuit amps (A)	MOP: Max. overcurrent protection (A)
RLA: Rated load amps (A)	W: Fan motor rated output (W)

### REFRIGERANT PIPING SPECIFICATIONS

Throttle type (Indoor)	EXV
Throttle type (Outdoor)	EXV
Liquid Size	3/8" (9.52mm)
Gas Size	3/4" (19mm)
Max. Piping Length (ft/m)	164 (50)
Max. Height Difference (ft/m)	82 (25)
Max. Pre-charged Length (ft/m)	25 (7.5)
Refrigerant Pre-charged Amount (oz/kg)	74 (2.1)
Additional Charge of Refrigerant ((oz/ft)/(g/m))	0.7 (65)
Connection Method	Flared

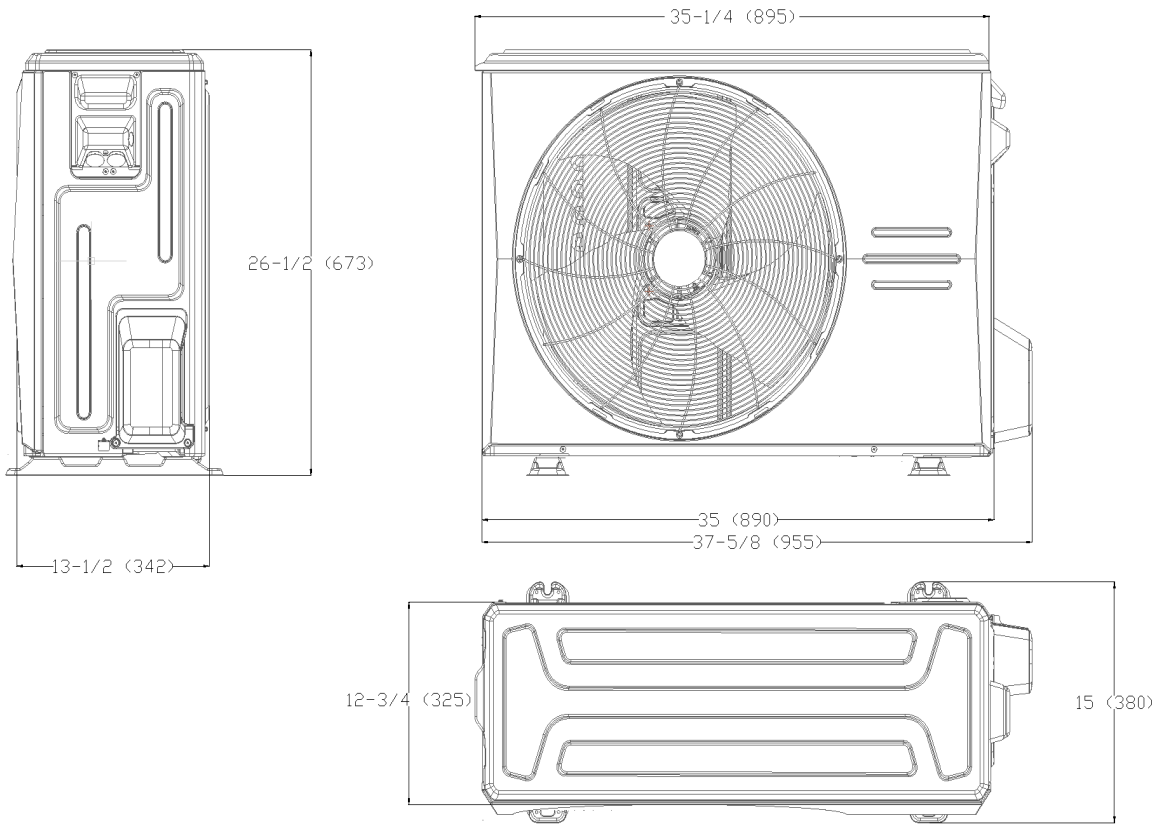
# INDOOR UNIT DIMENSIONS



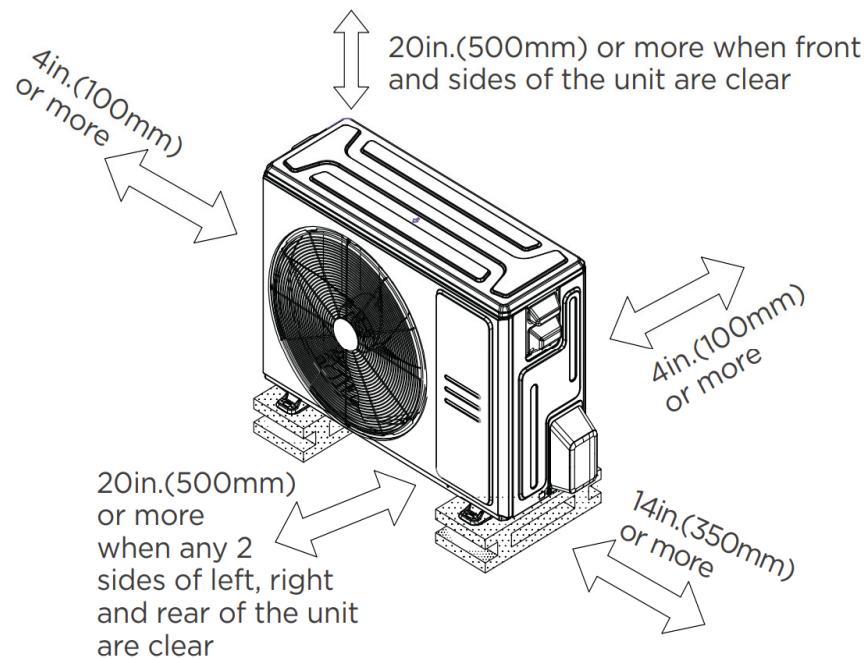
Model		ACiQ-24-ACL-B	ACiQ-24-ACL-14-B	ACiQ-36-ACL-B	ACiQ-36-ACL-17-B	ACiQ-48-ACL-B	ACiQ-60-ACL-B
		inch (millimeter)	inch (millimeter)	inch (millimeter)	inch (millimeter)	inch (millimeter)	inch (millimeter)
A	Unit Height	18 (457)	18 (457)	24 (611)	23-9/16 (599)	27-3/4 (706)	28 (711)
B	Unit Width	17-1/2 (445)	14-1/2 (368)	21 (534)	17-1/2 (445)	21-5/8 (549)	24-1/2 (622)
C	Supply Air Opening Width	16-3/16 (411)	13-1/4 (336)	19-3/4 (502)	16-3/16 (411)	21-1/4 (514)	23-1/4 (591)
D	Return Air Opening Width	14-15/16 (380)	11-15/16 (303)	19-1/2 (498)	14-15/16 (380)	20 (509)	23-1/8 (587)
E	Condensate Drain Height	1-7/16 (38)	1-7/16 (38)	2-3/16 (55)	1-7/16 (38)	2-1/8 (50)	2-3/16 (55)
F	Liquid Line Height	11-3/8 (290)	11-3/8 (290)	17-1/2 (445)	16-3/8 (417)	17-5/8 (449)	21-7/16 (545)

## OUTDOOR UNIT DIMENSIONS

Unit: inch (mm)



## INSTALLATION INSTRUCTIONS FOR OUTDOOR UNIT



#### FEATURES

- Multi-position installation: horizontal (left or right), vertical (up or down)
- Aluminum Coil
- R454B refrigerant sensor
- Easy Maintenance
- Multiple control options available:
  - Two way communication wired controller with built-in WiFi:120N(X6W)
  - Third-Party 24V Thermostat