



# Submittal Data Sheet

Indoor Unit Model#: ACiQ-30W-WMB

Outdoor Unit Model#: ACiQ-30-EHPD

## 30K DUCTED WALL MOUNT AIR HANDLER & 30K STD. HEAT PUMP SYSTEM

Location:	Approval:
Engineer:	Date:
Submitted to:	Construction:
Submitted by:	Unit #:
Reference:	Drawing #:

System Product Code: 810175552996  
Indoor Unit Product Code: 810175552958  
Outdoor Unit Product Code: 810175550428



### INDOOR UNIT SPECIFICATIONS

ESP (inWG)		0~0.8
Indoor Air Flow (Turbo/H/M/L/Si) (CFM)		988.8 / 894.7 / 806.4 / 712.2 / NA
Indoor Noise Level (Turbo/H/M/L/Si) (dBA)		50.5 / 50 / 48 / 36 / NA
Dimension (W×D×H)	inch	22.01 x 19.02 x 40.04
	mm	559 × 483 × 1017
Package (W×D×H)	inch	24.61 x 22.83 x 46.97
	mm	625 × 580 × 1193
Net/Gross Weight	lbs	110.23 / 131.39
	kg	50 / 59.6

### OUTDOOR UNIT SPECIFICATIONS

Compressor Type		ROTARY
Compressor Model		KTF250D22UMT
Refrigerant		R454B
Refrigerant Oil Charge (mL)		670
Refrigerant Oil		VG74
Outdoor Air Flow (Max) (CFM)		3001.9
Outdoor Noise Level (dBA)		61
Dimension (W×D×H)	inch	37.24 x 16.14 x 31.89
	mm	946 × 410 × 810
Package (W×D×H)	inch	42.91 x 19.69 x 34.84
	mm	1090 × 500 × 885
Net/Gross Weight	lbs	141.76 / 152.34
	kg	64.3 / 69.1

### EFFICIENCY RATINGS

Cooling		Heating	
SEER2	18.6	HSPF2-4	8.7
EER2	11	COP	3.5

### COOLING PERFORMANCE

Cooling (Btu/hr)	
Rated Capacity	30000
Min/Max Capacity	10100~34400
Moisture Removal (L/h)	2.99
Standard Operating Range (°F/°C)	-25~50 (-25~50)
Rated Cooling Conditions:	Indoor: 80°F DB/67°F WB
	Outdoor: 95°F DB/75°F WB

### HEATING PERFORMANCE

Heating (Btu/hr)	
1. @ 47°F Rated	31000
2. @ 47°F Min/Max Capacity	6500~31900
3. @ 17°F Rated	18200
4. @ 5°F Rated: Capacity / COP	18700 / 1.99
5. @ 5°F Max: Capacity	18700
Standard Operating Range (°F/°C)	-25~24 (-25~24)
1. Rated Heating Conditions:	Indoor: 70°F DB/60°F WB
	Outdoor: 47°F DB/43°F WB
2. Rated Heating Conditions:	Indoor: 70°F DB/60°F WB
	Outdoor: 17°F DB/15°F WB
3. Heating Conditions, Compressor Operating at Max. Frequency	Indoor: 70°F DB/60°F WB
	Outdoor: 5°F DB/5°F WB

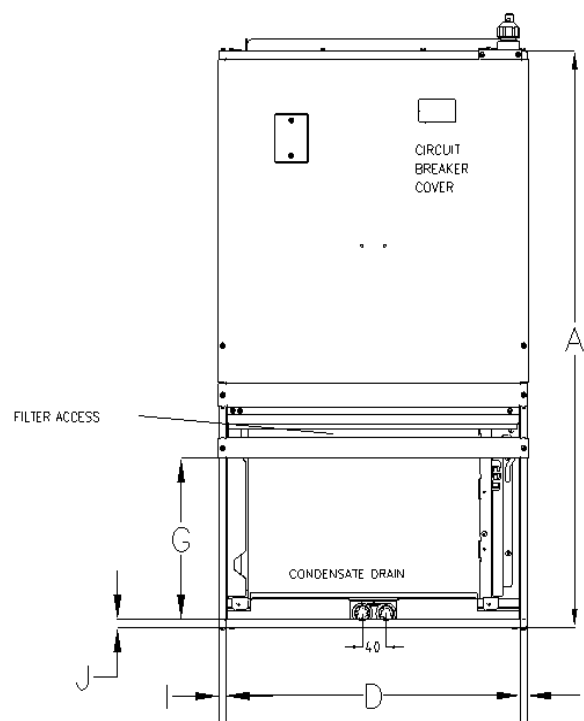
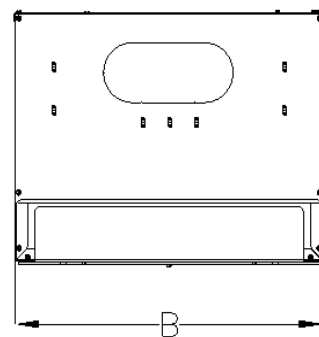
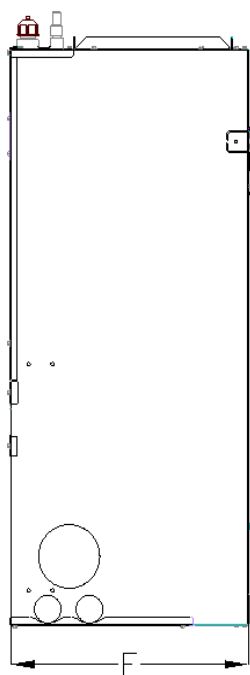
### ELECTRICAL SPECIFICATIONS

Indoor Power Supply	115/208/230V, 60Hz, 1Ph
Indoor MCA 115V/(208/230V)	6
Indoor MOP	15
Outdoor Power Supply	208/230V, 60Hz, 1Ph
Outdoor MCA	22.5
Outdoor MOP	25
Communication Wiring	AWG 20-2
Compressor RLA	17
Outdoor Fan Motor RLA	1.1
Outdoor Fan Motor W	/
Indoor Fan Motor RLA	4.5
Indoor Fan Motor W	375
System Power Input @ Cooling (W)	2727 (670 ~ 3130)
System Power Input @ Heating (W)	2596 (400 ~2550)
MCA: Min. circuit amps (A)	MOP: Max. overcurrent protection (A)
RLA: Rated load amps (A)	W: Fan motor rated output (W)

### REFRIGERANT PIPING SPECIFICATIONS

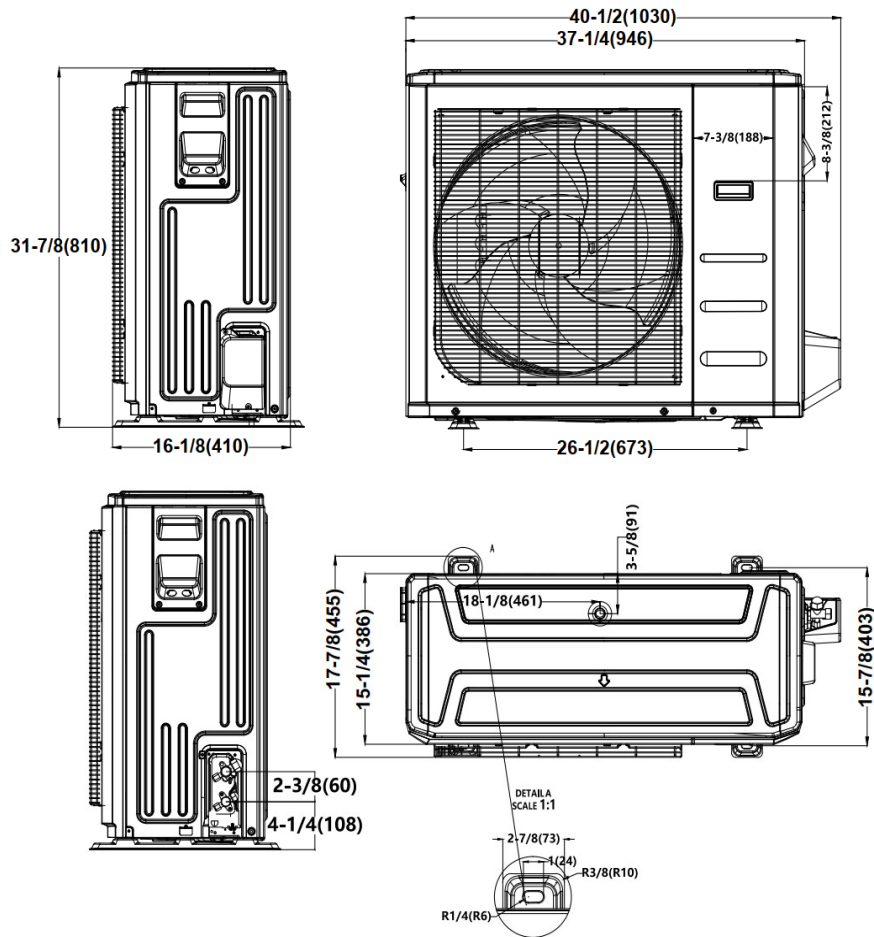
Throttle type (Indoor)	EXV
Throttle type (Outdoor)	EXV
Liquid Size	9.52mm (3/8in)
Gas Size	19mm (3/4in)
Max. Piping Length (ft/m)	164 (50)
Max. Height Difference (ft/m)	82 (25)
Max. Pre-charged Length (ft/m)	24.6 (7.5)
Refrigerant Pre-charged Amount (oz/kg)	91.71 (2.6)
Additional Charge of Refrigerant ((oz/ft)/(g/m))	0.7 (65)
Connection Method	Flared

# INDOOR UNIT DIMENSIONS

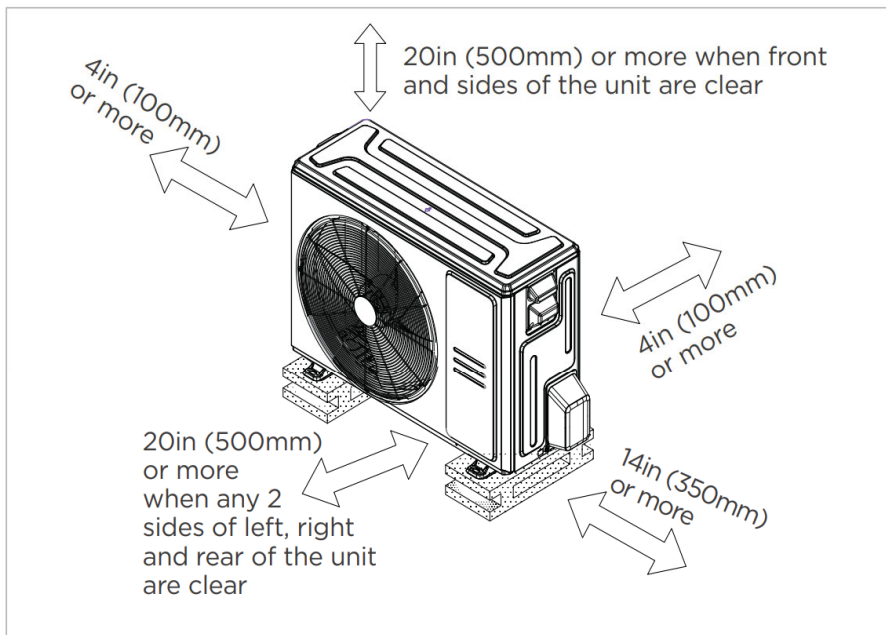


Dimensions		Model(Btu/h)	18K/24K		30K/36K	
			inch	mm	inch	mm
A	Model Height		36.5	928	49	1017
B	Model Width		20.3	515	21	559
C	Supply Air Opening Width		17.4	442	18.8	478.6
D	Return Air Opening Width		19.4	493.8	21.2	537.8
E	Model Depth		15.7	399	21	483
F	Supply Air Opening Depth		10.4	265.2	9.3	235.4
G	Return Air Opening Depth		10.3	261	13.1	332.5
H	Supply Air Opening Clearance		1.1	29.1	1.6	41
I	Return Air Opening Side Clearance		0.42	10.6	0.42	10.6
J	Return Air Opening Front Clearance		0.47	12	0.63	16

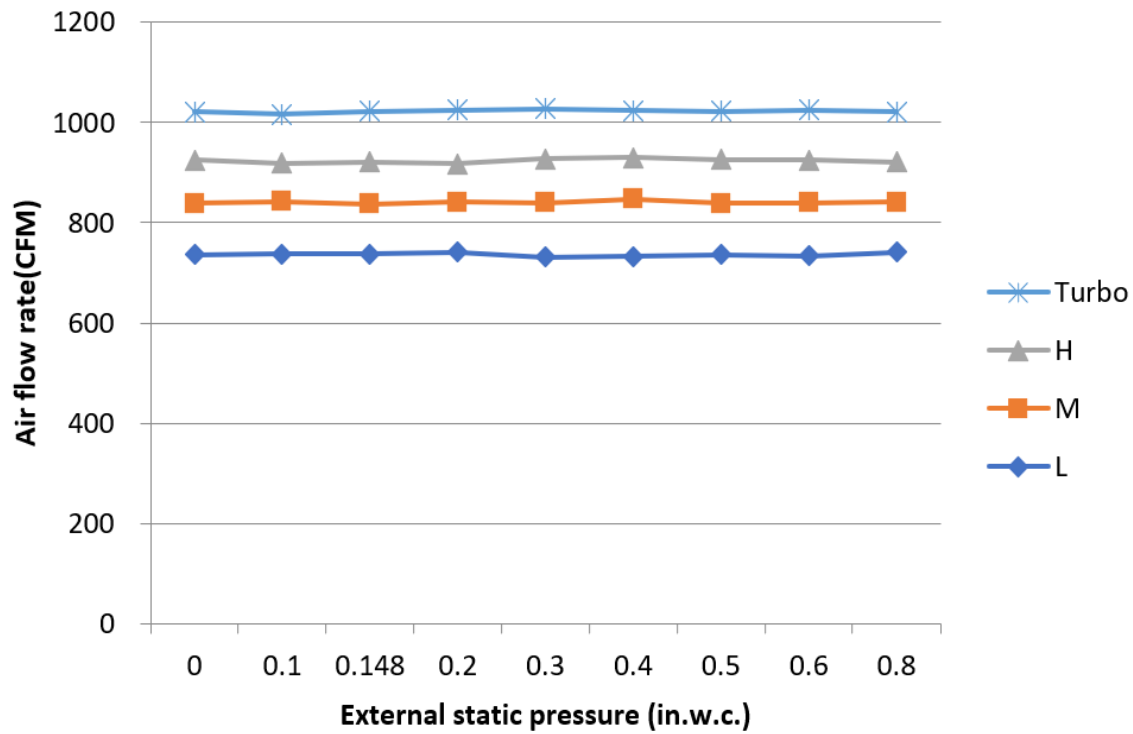
# OUTDOOR UNIT DIMENSIONS



## INSTALLATION INSTRUCTIONS FOR OUTDOOR UNIT



✓ Meets all spatial requirements shown in Installation Clearance Requirements above.

**30K****FEATURES**

- Multi-position of return air: front (factory standard) or bottom
- Aluminum Coil
- Constantly Air Flow system up to 0.80 In.W.G
- Optional Auxiliary heat kit up to 10kW
- Easy Maintenance
- Multiple control options available:
  - Two way communication wired controller:120N(X6)
  - Two way communication wired controller with built-in WiFi:120N(X6W)
  - Wireless remote controller
  - Third-Party 24V Thermostat
- High efficiency up to 18.5 SEER2, 11.5 EER2, 9.4 HSPF2
- Chassis heater and crankcase heater equipped as standard