



Submittal Data Sheet

Indoor Unit Model#: ACiQ-24W-WMB

Outdoor Unit Model#: ACiQ-24-EHPD

24K DUCTED WALL MOUNT AIR HANDLER & 24K STD. HEAT PUMP SYSTEM

Location:	Approval:
Engineer:	Date:
Submitted to:	Construction:
Submitted by:	Unit #:
Reference:	Drawing #:

System Product Code: 81017552989
Indoor Unit Product Code: 81017552941
Outdoor Unit Product Code: 81017550398



INDOOR UNIT SPECIFICATIONS

ESP (inWG)		0~0.8
Indoor Air Flow (Turbo/H/M/L/Si) (CFM)		824.0 / 759.3 / 694.5 / 629.8 / NA
Indoor Noise Level (Turbo/H/M/L/Si) (dBA)		53.0 / 51 / 48 / 37.5 / NA
Dimension (W×D×H)	inch	20.28 x 15.71 x 36.54
	mm	515 x 399 x 928
Package (W×D×H)	inch	22.83 x 19.49 x 42.91
	mm	580 x 495 x 1090
Net/Gross Weight	lbs	91.49 / 111.33
	kg	41.5 / 50.5

OUTDOOR UNIT SPECIFICATIONS

Compressor Type		ROTARY
Compressor Model		KTM240D46UKT2
Refrigerant		R454B
Refrigerant Oil Charge (mL)		620
Refrigerant Oil		VG74
Outdoor Air Flow (Max) (CFM)		1765.8
Outdoor Noise Level (dBA)		59
Dimension (W×D×H)	inch	35.04 x 13.46 x 26.50
	mm	890 x 342 x 673
Package (W×D×H)	inch	39.17 x 15.67 x 29.13
	mm	995 x 398 x 740
Net/Gross Weight	lbs	101.41 / 109.13
	kg	46 / 49.5

EFFICIENCY RATINGS

Cooling		Heating	
SEER2	17.4	HSPF2-4	10.4
EER2	10.8	COP	3.80

COOLING PERFORMANCE

Cooling (Btu/hr)	
Rated Capacity	24000
Min/Max Capacity	10100~27500
Moisture Removal (L/h)	2.5
Standard Operating Range (°F/°C)	-25~50 (-25~50)
Rated Cooling Conditions:	Indoor: 80°F DB/67°F WB
	Outdoor: 95°F DB/75°F WB

HEATING PERFORMANCE

Heating (Btu/hr)	
1. @ 47°F Rated	25000
2. @ 47°F Min/Max Capacity	7000~32200
3. @ 17°F Rated	20800
4. @ 5°F Rated: Capacity / COP	19400 / 1.96
5. @ 5°F Max: Capacity	19400
Standard Operating Range (°F/°C)	-25~24 (-25~24)
1. Rated Heating Conditions:	Indoor: 70°F DB/60°F WB
	Outdoor: 47°F DB/43°F WB
2. Rated Heating Conditions:	Indoor: 70°F DB/60°F WB
	Outdoor: 17°F DB/15°F WB
3. Heating Conditions, Compressor Operating at Max. Frequency	Indoor: 70°F DB/60°F WB
	Outdoor: 5°F DB/5°F WB

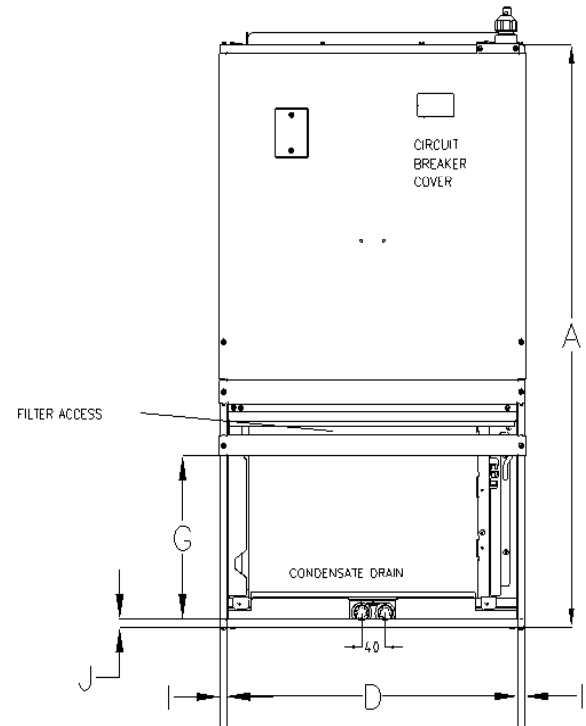
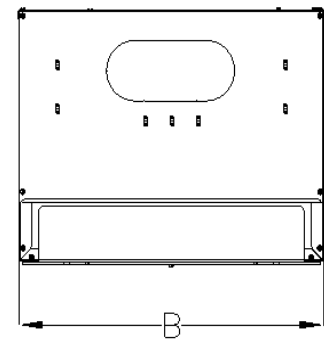
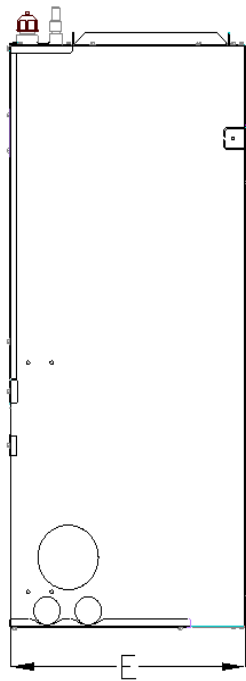
ELECTRICAL SPECIFICATIONS

Indoor Power Supply	115/208/230V, 60Hz, 1Ph
Indoor MCA 115V/(208/230V)	4
Indoor MOP	15
Outdoor Power Supply	208/230V, 60Hz, 1Ph
Outdoor MCA	19
Outdoor MOP	20
Communication Wiring	AWG 20-2
Compressor RLA	14
Outdoor Fan Motor RLA	1
Outdoor Fan Motor W	/
Indoor Fan Motor RLA	3
Indoor Fan Motor W	250
System Power Input @ Cooling (W)	2222 (830 ~ 2850)
System Power Input @ Heating (W)	1980 (455 ~2590)
MCA: Min. circuit amps (A)	MOP: Max. overcurrent protection (A)
RLA: Rated load amps (A)	W: Fan motor rated output (W)

REFRIGERANT PIPING SPECIFICATIONS

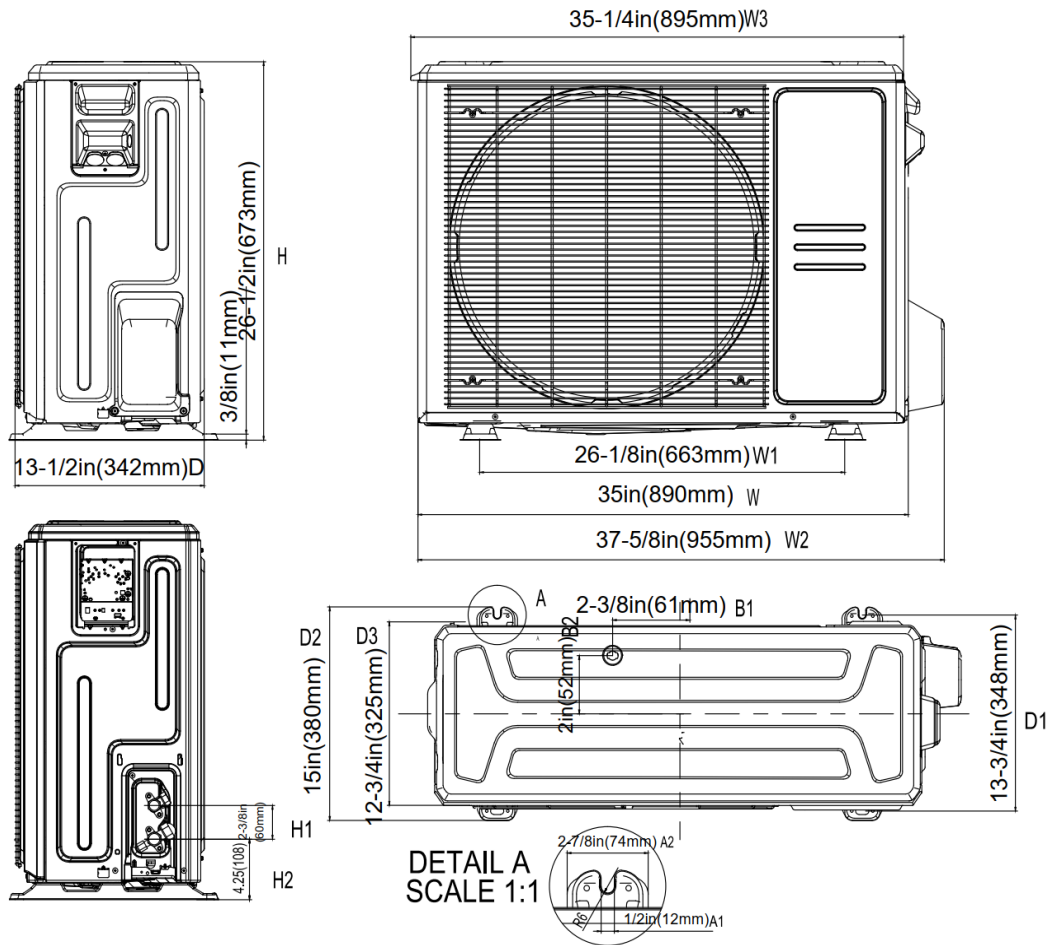
Throttle type (Indoor)	EXV
Throttle type (Outdoor)	EXV
Liquid Size	9.52mm (3/8in)
Gas Size	19mm (3/4in)
Max. Piping Length (ft/m)	164 (50)
Max. Height Difference (ft/m)	82 (25)
Max. Pre-charged Length (ft/m)	24.6 (7.5)
Refrigerant Pre-charged Amount (oz/kg)	74.08 (2.1)
Additional Charge of Refrigerant ((oz/ft)/(g/m))	0.7 (65)
Connection Method	Flared

INDOOR UNIT DIMENSIONS

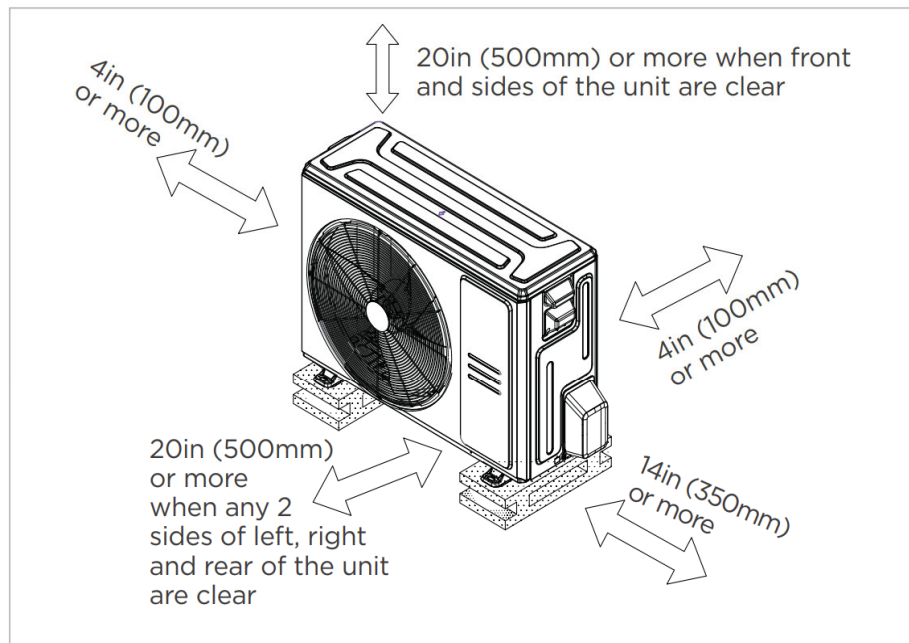


Dimensions		Model(Btu/h)		18K/24K		30K/36K	
				inch	mm	inch	mm
A	Model Height			36.5	928	49	1017
B	Model Width			20.3	515	21	559
C	Supply Air Opening Width			17.4	442	18.8	478.6
D	Return Air Opening Width			19.4	493.8	21.2	537.8
E	Model Depth			15.7	399	21	483
F	Supply Air Opening Depth			10.4	265.2	9.3	235.4
G	Return Air Opening Depth			10.3	261	13.1	332.5
H	Supply Air Opening Clearance			1.1	29.1	1.6	41
I	Return Air Opening Side Clearance			0.42	10.6	0.42	10.6
J	Return Air Opening Front Clearance			0.47	12	0.63	16

OUTDOOR UNIT DIMENSIONS

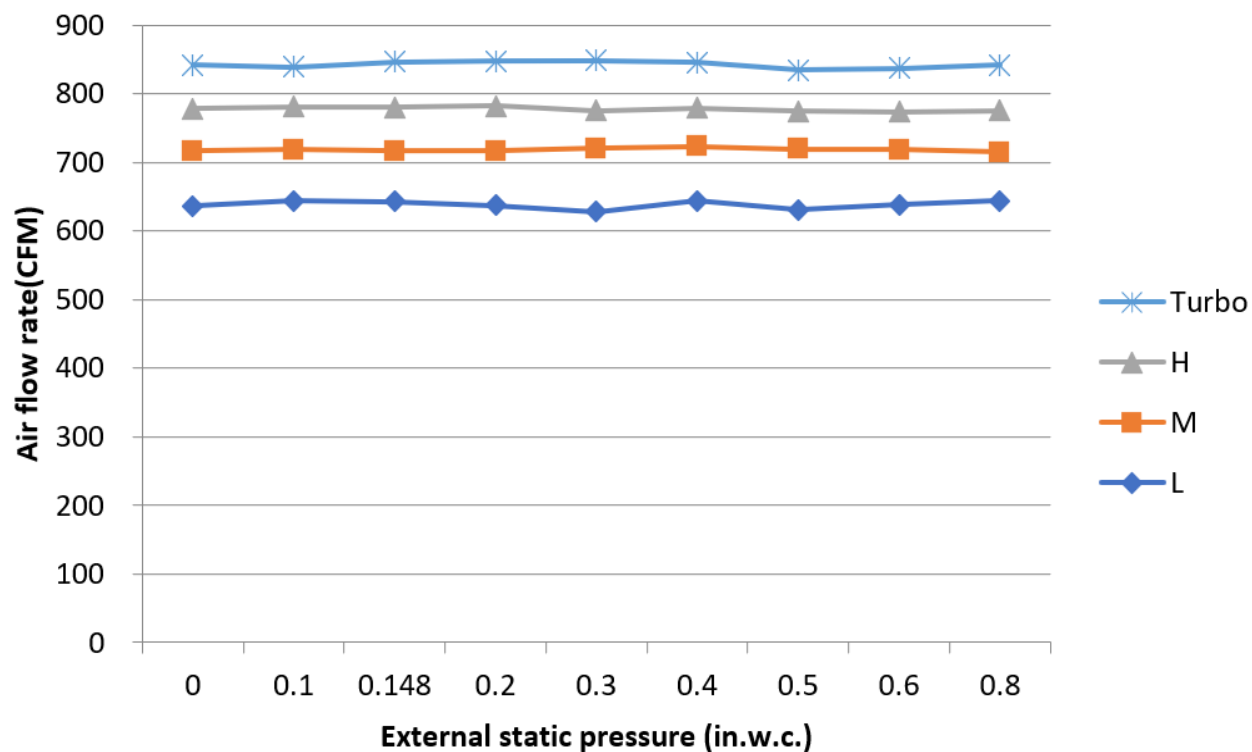


INSTALLATION INSTRUCTIONS FOR OUTDOOR UNIT



✓ Meets all spatial requirements shown in Installation Clearance Requirements above.

24K



FEATURES

- Multi-position of return air: front (factory standard) or bottom
- Aluminum Coil
- Constantly Air Flow system up to 0.80 In.W.G
- Optional Auxiliary heat kit up to 10kW
- Easy Maintenance
- Multiple control options available:
 - Two way communication wired controller: 120N(X6)
 - Two way communication wired controller with built-in WiFi: 120N(X6W)
 - Wireless remote controller
 - Third-Party 24V Thermostat
- High efficiency up to 18.5 SEER2, 11.5 EER2, 9.4 HSPF2
- Chassis heater and crankcase heater equipped as standard