



Submittal Data Sheet

Indoor Unit Model#: ACiQ-24W-PB

Outdoor Unit Model#: ACiQ-24-EHPD

24K CEILING-MOUNT (PANCAKE-STYLE) AIR HANDLER & 24K STD. HEAT PUMP SYSTEM

| | |
|---------------|---------------|
| Location: | Approval: |
| Engineer: | Date: |
| Submitted to: | Construction: |
| Submitted by: | Unit #: |
| Reference: | Drawing #: |

System Product Code: 810175553146
Indoor Unit Product Code: 810175553108
Outdoor Unit Product Code: 810175550398



INDOOR UNIT SPECIFICATIONS

| | | |
|---|------|------------------------------|
| ESP (in.W.G) | | 0-0.8 |
| Indoor Noise Level (Turbo/H/M/L/Si) (dBA) | | NA / 56.5 / 53.5 / 51.5 / NA |
| Dimension (WxDxH) | inch | 49.13 x 23.33 x 10.93 |
| | mm | 1248 x 592.7 x 277.6 |
| Package (WxDxH) | inch | 53.15 x 26.77 x 13.58 |
| | mm | 1350 x 680 x 345 |
| Net/Gross Weight | lbs | 58 / 63 |
| | kg | 58 / 63 |

OUTDOOR UNIT SPECIFICATIONS

| | | |
|------------------------------|------|-----------------------|
| Compressor Type | | ROTARY |
| Compressor Model | | KTM240D46UKT2 |
| Refrigerant | | R454B |
| Refrigerant Oil Charge (mL) | | 620 |
| Refrigerant Oil | | VG74 |
| Outdoor Air Flow (Max) (CFM) | | 1766.0 |
| Outdoor Noise Level (dBA) | | 59 |
| Dimension (WxDxH) | inch | 35.04 x 13.46 x 26.5 |
| | mm | 890 x 342 x 673 |
| Package (WxDxH) | inch | 39.17 x 15.67 x 29.13 |
| | mm | 995 x 398 x 740 |
| Net/Gross Weight | lbs | 101.41 / 109.13 |
| | kg | 46 / 49.5 |

EFFICIENCY RATINGS

| Cooling | | Heating | |
|---------|----|---------|------|
| SEER2 | 16 | HSPF2-4 | 9 |
| EER2 | 10 | COP | 3.45 |

COOLING PERFORMANCE

| Cooling (Btu/hr) | |
|----------------------------------|--------------------|
| Rated Capacity | 24000 |
| Min/Max Capacity | 7400 ~ 27000 |
| Moisture Removal (L/h) | 1.91 |
| Standard Operating Range (°F/°C) | -13 ~ 122 (-25~50) |
| Rated Cooling Conditions: | |
| Indoor: 80°F DB/67°F WB | |
| Outdoor: 95°F DB/75°F WB | |

HEATING PERFORMANCE

| Heating (Btu/hr) | |
|---|-------------------|
| 1. @ 47°F Rated | 25000 |
| 2. @ 47°F Min/Max Capacity | 9200 ~ 32200 |
| 3. @ 17°F Rated | 19800 |
| 4. @ 5°F Rated: Capacity / COP | 19000 / 1.8 |
| 5. @ 5°F Max: Capacity | 19000 |
| Standard Operating Range (°F/°C) | -13 ~ 75 (-25~24) |
| 1. Rated Heating Conditions: | |
| Indoor: 70°F DB/60°F WB | |
| Outdoor: 47°F DB/43°F WB | |
| 2. Rated Heating Conditions: | |
| Indoor: 70°F DB/60°F WB | |
| Outdoor: 17°F DB/15°F WB | |
| 3. Heating Conditions, Compressor Operating at Max. Frequency | |
| Indoor: 70°F DB/60°F WB | |
| Outdoor: 5°F DB/5°F WB | |

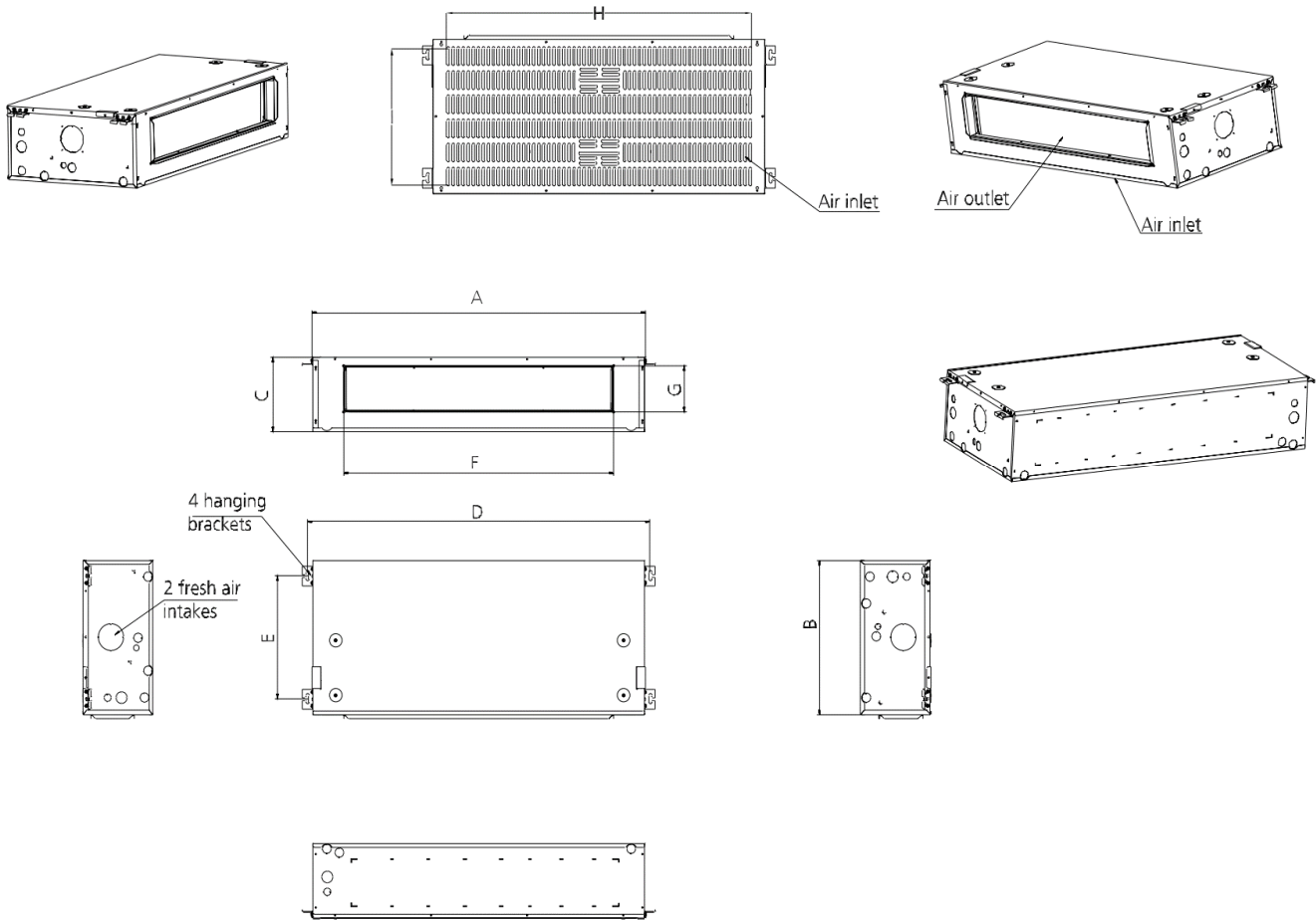
ELECTRICAL SPECIFICATIONS

| | |
|----------------------------------|--------------------------------------|
| Indoor Power Supply | 115/208/230, 60Hz, 1Ph |
| Indoor MCA 115V/(208/230V) | 115V: 7; 208/230V: 5 |
| Indoor MOP | 15 |
| Outdoor Power Supply | 115/208/230, 60Hz, 1Ph |
| Outdoor MCA | 19 |
| Outdoor MOP | 20 |
| Communication Wiring | AWG 20/2 |
| Compressor RLA | 14 |
| Outdoor Fan Motor RLA | 1 |
| Outdoor Fan Motor W | 80 |
| Indoor Fan Motor RLA | 115V: 5.5; 208/230V: 3.5 |
| Indoor Fan Motor W | 250 |
| System Power Input @ Cooling (W) | 2400 (700 ~ 2900) |
| System Power Input @ Heating (W) | 2123 (600 ~ 2750) |
| MCA: Min. circuit amps (A) | MOP: Max. overcurrent protection (A) |
| RLA: Rated load amps (A) | W: Fan motor rated output (W) |

REFRIGERANT PIPING SPECIFICATIONS

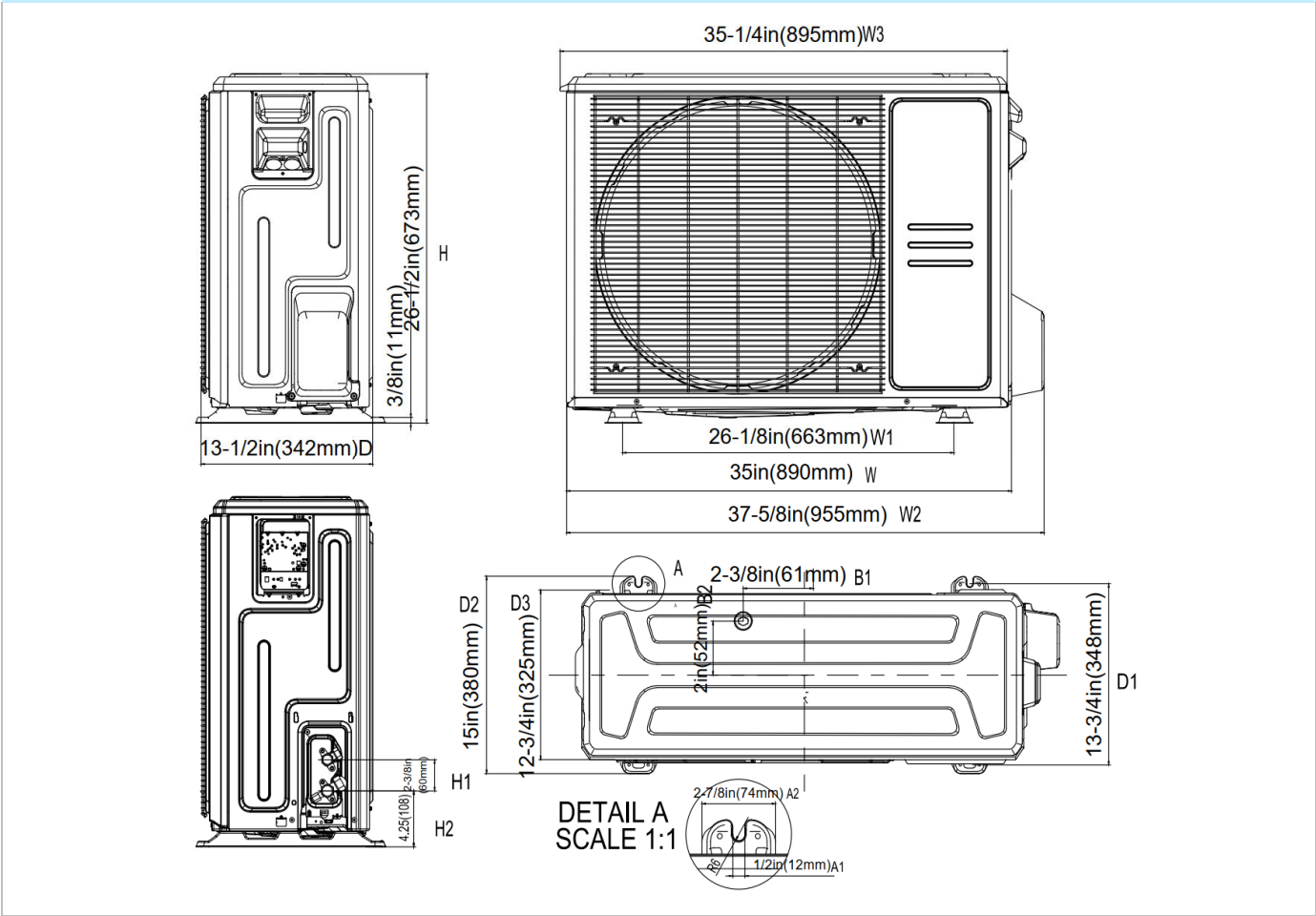
| | |
|--|----------------|
| Throttle type (Indoor) | EXV |
| Throttle type (Outdoor) | EXV |
| Liquid Size | 9.52mm (3/8in) |
| Gas Size | 19mm (3/4in) |
| Max. Piping Length (ft/m) | 164 (50) |
| Max. Height Difference (ft/m) | 82 (25) |
| Max. Pre-charged Length (ft/m) | 24.6 (7.5) |
| Refrigerant Pre-charged Amount (oz/kg) | 74.08 (2.1) |
| Additional Charge of Refrigerant ((oz/ft)/(g/m)) | 0.7 (65) |
| Connection Method | Flared |

INDOOR UNIT DIMENSIONS

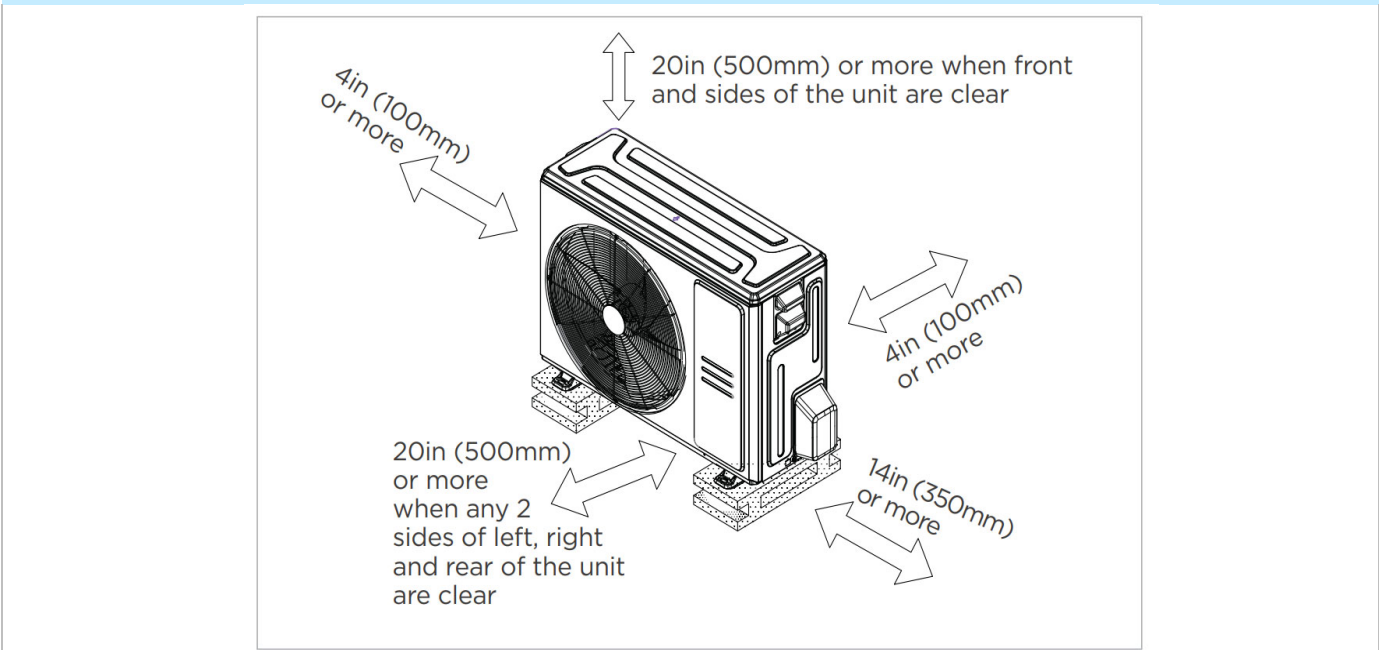


| Dimensions \ Model | | | 18k | 24k | 30k/ | 36k |
|-------------------------|---|--------------------|-----------------|----------------|-----------------|----------------|
| | | | inch(mm) | inch(mm) | inch(mm) | inch(mm) |
| Outline Dimension | A | Model Model | 39-15/16 (1015) | 45-7/8 (1165) | 51-15/16 (1320) | 58-7/8 (1495) |
| | B | Model Width | 23-5/16 (593) | 23-5/16 (593) | 23-5/16 (593) | 23-5/16 (593) |
| | C | Model Height | 10-15/16 (278) | 10-15/16 (278) | 10-15/16 (278) | 10-15/16 (278) |
| Size Of Mounted Lug | D | Mounted Lug Length | 41-5/8 (1057) | 47-1/2 (1207) | 53-5/8 (1362) | 60-1/2 (1537) |
| | E | Mounted Lug Width | 18-1/8 (460) | 18-1/8 (460) | 18-1/8 (460) | 18-1/8 (460) |
| Air Outlet Opening Size | F | Air Outlet Length | 30-5/16 (769) | 36-3/16 (919) | 42-5/16 (1074) | 49-3/16 (1249) |
| | G | Air Outlet Width | 6-7/8 (174) | 6-7/8 (174) | 6-7/8 (174) | 6-7/8 (174) |
| Air Return Opening Size | H | Air Return Length | 38-3/8 (975) | 44-5/16 (1125) | 50-3/8 (1280) | 57-1/4 (1455) |
| | I | Air Return Width | 21-1/8 (536) | 21-1/8 (536) | 21-1/8 (536) | 21-1/8 (536) |

OUTDOOR UNIT DIMENSIONS

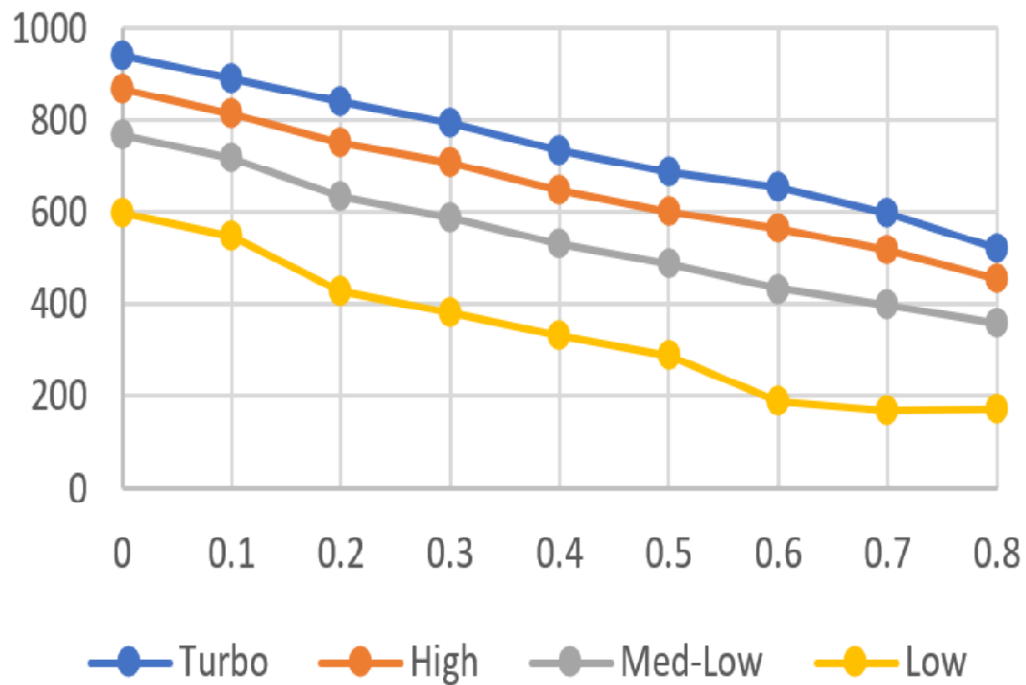


INSTALLATION INSTRUCTIONS FOR OUTDOOR UNIT



☒ Meets all spatial requirements shown in Installation Clearance Requirements above.

24K



FEATURES

- High efficiency up to 16.8 SEER2, 12 EER2, 10.5 HSPF2
- Aluminum Coil
- IDU compatible with 115V and 230V
- Constantly Air Flow system up to 0.80 In.W.G
- Optional Auxiliary heat kit up to 10kW
- Easy Maintenance
- Multiple control options available:
 - Two way communication wired controller:120N(X6)
 - Two way communication wired controller with built-in WiFi:120N(X6W)
 - Wireless remote controller
 - Third-Party 24V Thermostat
- Adaptive Control wiring method on 24V and RS485
- Downward or Backward (optional) air inlet
- Chassis heater and crankcase heater equipped as standard