



Submittal Data Sheet

Indoor Unit Model#: ACiQ-18WS-HP230C
Outdoor Unit Model#: ACiQ-18ZS-HP230C

18K (230V) Standard Heat Single-Zone Heat Pump System

Location:	Approval:
Engineer:	Date:
Submitted to:	Construction:
Submitted by:	Unit #:
Reference:	Drawing #:

System Product Code: 810175550220
Indoor Unit Product Code: 810175550237
Outdoor Unit Product Code: 810175550244



EFFICIENCY RATINGS

Cooling		Heating	
SEER2	24.0	HSPF2-4	11.1
EER2	13.5	COP	3.81

COOLING PERFORMANCE

Cooling (Btu/hr)	
Rated Capacity	18000
Min./Max. Capacity	3600~20000
Moisture Removal (L/h)	1.4
Standard Operating Range (°F/°C)	-13~122 (-25~50)
Rated Cooling Conditions:	Indoor: 80°F DB/67°F WB
	Outdoor: 95°F DB/75°F WB

HEATING PERFORMANCE

Heating (Btu/hr)	
1. @ 47°F Rated	18000
1. @ 47°F Min./Max. Capacity	7600~22000
2. @ 17°F Rated	13000
3. @ 5°F Rated: Capacity / COP	13000/2.35
3. @ 5°F Max: Capacity	13000
Standard Operating Range (°F/°C)	-13~75 (-25~24)
1. Conditions:	Indoor: 70°F DB/60°F WB
	Outdoor: 47°F DB/43°F WB
2. Conditions:	Indoor: 70°F DB/60°F WB
	Outdoor: 17°F DB/15°F WB
3. Conditions	Indoor: 70°F DB/60°F WB
	Outdoor: 5°F DB/5°F WB

INDOOR UNIT SPECIFICATIONS

Indoor Air Flow (Turbo/H/M/L/Si) (CFM)		759.3 / 500.3 / 441.4 / 370.8 / NA
Indoor Noise Level (Turbo/H/M/L/Si) (dBA)		54 / 45 / 40.0 / 26 / 20
Dimension (W×D×H)	inch	42.60 x 9.21 x 13.27
	mm	1082.0 x 234.0 x 337.0
Package (W×D×H)	inch	45.47 x 16.34 x 12.40
	mm	1155 x 415 x 315
Net/Gross Weight	lbs	30.42 / 39.68
	kg	13.8 / 18

OUTDOOR UNIT SPECIFICATIONS

Compressor Type		ROTARY
Compressor Model		KSN140D58UFZ
Refrigerant		R454B
Refrigerant Oil Charge (mL)		440
Refrigerant Oil		VG74
Outdoor Air Flow (Max) (CFM)		1764.7
Outdoor Noise Level (dBA)		59.0
Dimension (W×D×H)	inch	35.04 x 13.46 x 26.50
	mm	890.0 x 342.0 x 673.0
Package (W×D×H)	inch	39.17 x 15.67 x 29.13
	mm	995 x 398 x 740
Net/Gross Weight	lbs	92.59 / 100.31
	kg	42.0 / 45.5

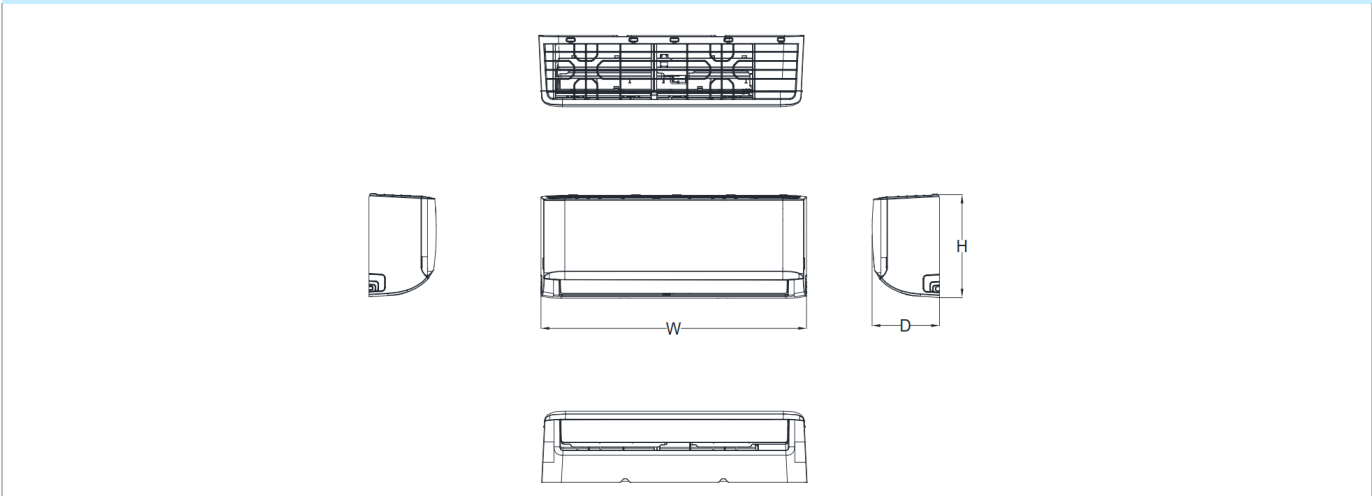
ELECTRICAL SPECIFICATIONS

Power Supply	208/230V, 60Hz, 1Ph
System MCA	18.0
Connection Wiring	14#x4
System MOP	20
Compressor RLA	10.0
Outdoor Fan Motor RLA	0.9
Outdoor Fan Motor W	80
Indoor Fan Motor RLA	0.8
Indoor Fan Motor W	58
System Power Input @ Cooling (W)	1333 (355 ~ 1700)
System Power Input @ Heating (W)	1385 (410 ~ 1750)
MCA: Min. circuit amps (A)	MOP: Max. overcurrent protection (A)
RLA: Rated load amps (A)	W: Fan motor rated output (W)

REFRIGERANT PIPING SPECIFICATIONS

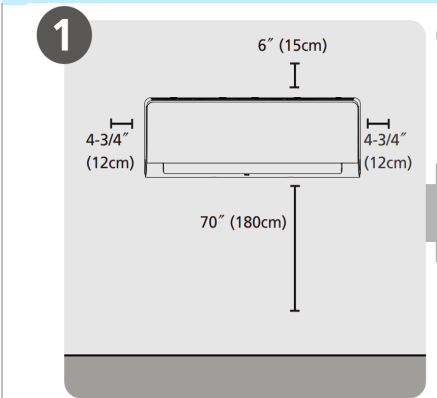
Throttle type (Indoor)	N/A
Throttle type (Outdoor)	EXV+Throttle valve
Liquid Size	6.35mm (1/4in)
Gas Size	12.7mm (1/2in)
Max. Piping Length (ft/m)	98.40 (30)
Max. Height Difference (ft/m)	65.60 (20)
Max. Pre-charged Length (ft/m)	24.6 (7.5)
Refrigerant Pre-charged Amount (oz/kg)	47.97 (1.36)
Additional Charge of Refrigerant ((oz/ft)/(g/m))	0.16 (15)
Connection Method	Flared

Indoor Unit Dimensions

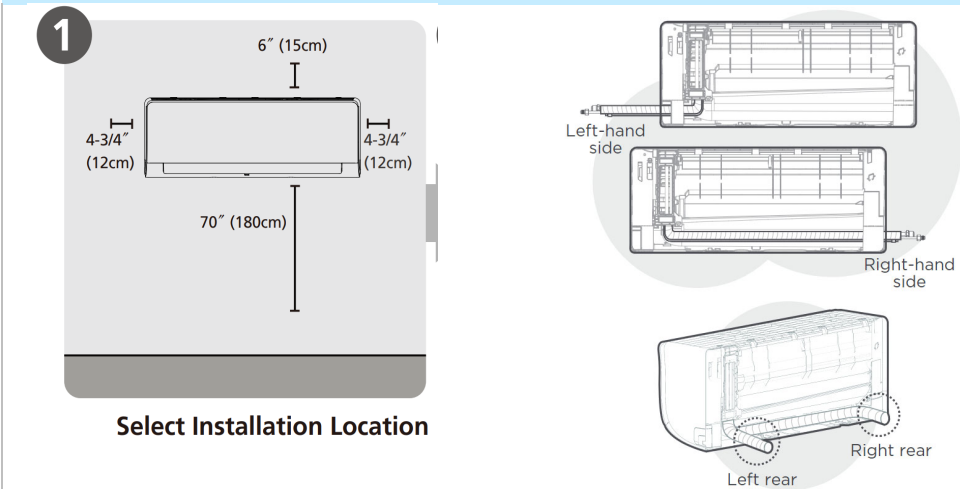


Capacity	Body Code	W(inch/mm)	D(mm/inch)	H(mm/inch)
6K~9K	A	28-3/4in /729mm	7-7/8in /200mm	11-1/2in /292mm
9K~12K	B	31-5/8in /802mm	7-7/8in /200mm	11-5/8in /295mm
18K	C	38-1/4in /971mm	9in/228mm	12-5/8in /321mm
18K~24K	D	42-5/8in /1082mm	9-1/4in/234mm	13-1/4in /337mm
30K~36K	F	49-5/8in /1259mm	11-1/8in/283mm	14-1/4in /362mm

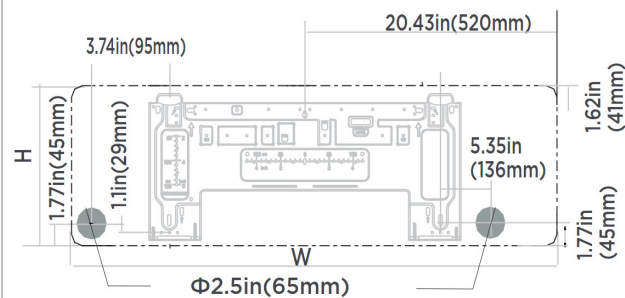
Indoor Unit Installation Instructions



Select Installation Location



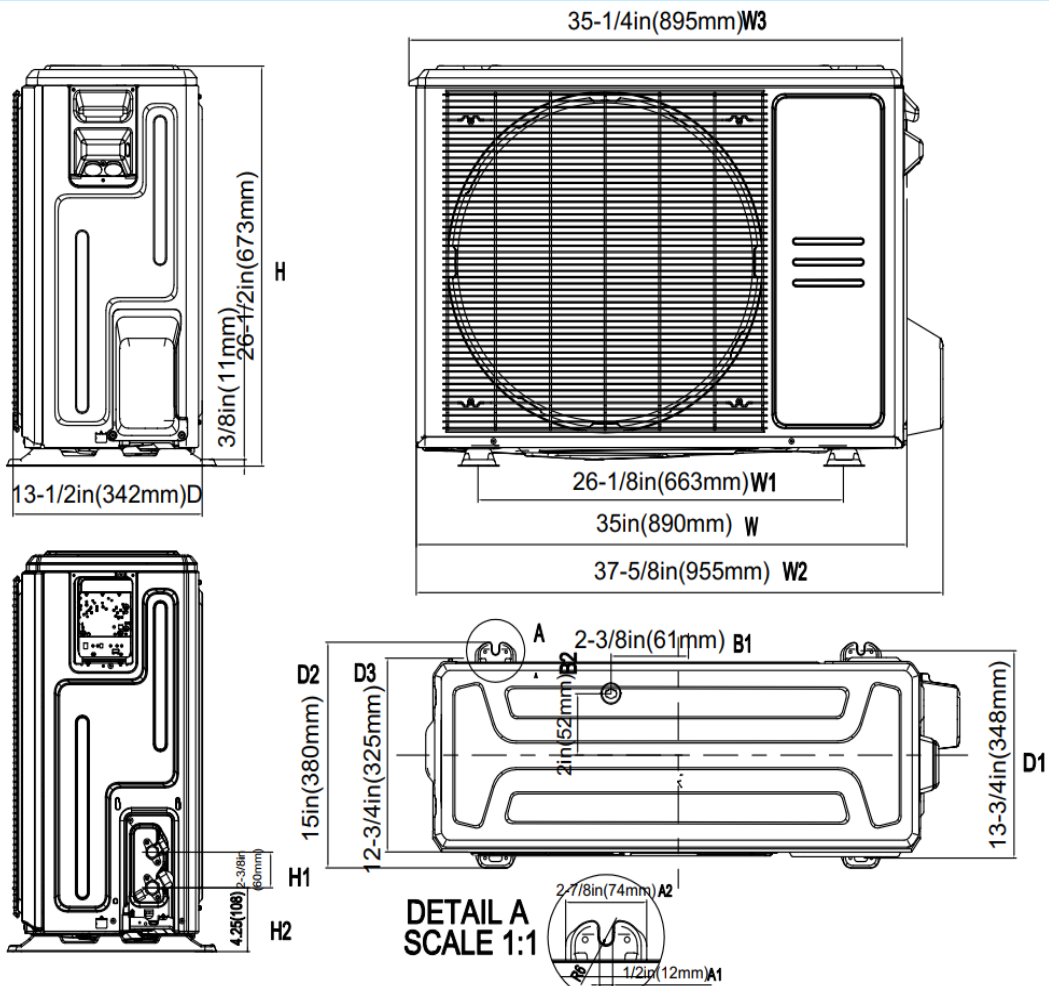
Based on the position of the wall hole relative to the mounting plate, choose the side from which the piping will exit the unit. You have four options for the exit direction of the piping.



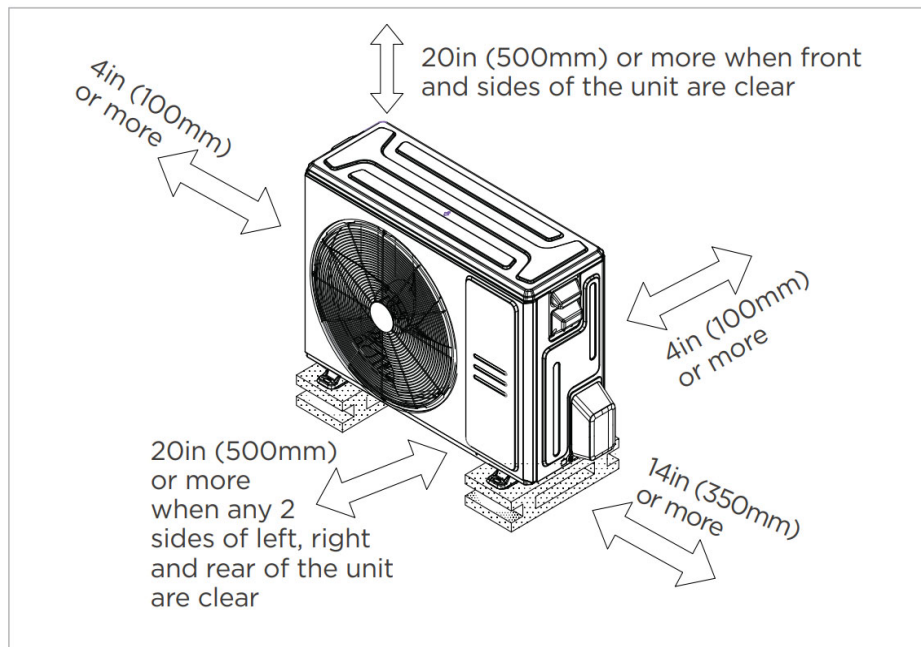
Indoor unit dimensions(WxH):
38.2in(971mm)x12.6in(321mm)

When the gas side connective pipe is Φ (5/8in)16mm or more, the wall hole should be (3-1/2in)90mm.

Outdoor Unit Dimensions



Outdoor Unit Installation Instructions



☒ Meets all spatial requirements shown in Installation Clearance Requirements above.

Features

- Indoor unit TU1 copper coil
- Humidity control
- 1~100% fan speed setting
- WiFi capability: through WiFi dongle or wired controller with built-in WiFi
- OTA(by using WiFi dongle)
- Multiple control options available:
 - Two way communication wired controller:120N(X6)
 - Two way communication wired controller with built-in WiFi:120N(X6W)
 - Infrared wired controller: 120L
 - Wireless remote controller
 - Third-Party 24V Thermostat*

*24V interface is required.