



Unit shown with service panels removed.  
Representative drawing only. Some models  
may vary in appearance.

### PRODUCT BENEFITS AND ENHANCEMENTS:

- One piece cabinet, reducing time and effort when field converting airflow orientation. Unit is convertible to either orientation with the correct door / accessories.
- Reduced air handler weight.
- Factory installed heat kits available from 10-20 kW.
- More room in cabinet for larger coils, as energy efficiencies increase, while maintaining overall cabinet dimensions.
- EF\*\*20FD-MH one-piece cabinet design fits up to a 27.5" tall coil.
- Rail-mounted blower assembly easily removed for service.
- Electrical access from both sides of the cabinet.
- Redesigned control panel for enhanced interface to wiring and components.
- Sloped coil shelf for optimal condensate management.

\*Constant torque does not change as ESP increases/decreases

### FEATURES AND SPECIFICATIONS:

#### APPLICATION VERSATILITY

Designed for the manufactured home market with flexibility in mind. One-piece air handler factory built as downflow (louvered door) air handler. Can also be field configured to upflow (solid door) configuration with the proper conversion kit. (Kits sold separately). 2 – 5 tons of cooling or heating airflow with a range of factory installed electric heat kits.

#### MOTOR

Constant torque ECM, speeds and torque controlled by software to maintain constant torque\*. Direct drive blowers circulate air quietly and efficiently. Motor speeds and torques pre-programmed in the motor at the factory. Blowers mounted on rails so they can be easily removed for service.

#### CABINET

Sturdy, galvanized steel cabinet with painted front panels. Cabinet fully insulated with 1/2" micro mat non-hygroscopic insulation to prevent sweating, to encapsulate glass fibers, and to provide excellent R-value. Mechanical fastening ensure insulation remains in place.

#### MODULAR ELECTRIC HEAT KITS

EF\*\*20FD-MH Series air handler heat kits are factory installed and available from 10 to 20 kW. Models with electric heat include sequencers and temperature limit switches for safe, efficient operation. Controls are accessible from the front for easy service. Electrical connections can be made from either side of the cabinet. Disconnect does not protrude through the wall panel. Fan time delay relay standard for increased efficiency. Replacement heat kits are available with either breakers or terminal blocks and easily installed in the field using molex plugs.

#### ELECTRONIC CIRCUIT BOARD

Electronic circuit board provides 30 secs ON/OFF blower time delay extracting more heat/cool from the coil. Automotive pull-style fuse integrated into board for easy diagnosis and replacement of fuse.

#### WARRANTY

Standard five-year limited parts warranty. Upgrades to an extended 10 year parts warranty with online registration.

#### OPTIONS

See options menu.

### ASK FOR ACIQ

In keeping with its commitment to continuous improvement. ACIQ reserves the right to make changes without notice and incurring obligation.

BRAND	BRAND FAMILY	HEATING (KW)	CABINET WIDTH	RETURN	ORIENTATION	CATEGORY
ACIQ	EF = Electric Furnace	10	20	F	D	MH = Mobile Home

HEATING AND COOLING PERFORMANCE AND ELECTRICAL DATA											
MODEL	NOMINAL COOLING (BTU)	ELECTRIC HEAT KIT MODEL	PERFORMANCE DATA					ELECTRICAL DATA			
			SPEED TAP	HEATING		TOTAL AMPS		MINIMUM CIRCUIT AMPACITY (MCA)		MAX BREAKER OR FUSE SIZE	
				(KW)		(A)		208V	240V	208V	240V
				208V	240V	208V	240V				
EF1*20FD	18,000 - 36,000	F(C,T)LS10	TAP 2	7.2	9.6	38.2	43.6	47.8	54.5	50A	60A
		F(C,T)LS15	TAP 3	7.2 / 3.6	9.6 / 4.8	38.2 / 17.3	43.6 / 20.0	47.8 / 21.6	54.5 / 25.0	50A / 25A	60A / 25A
EF2020FD	36,000 - 60,000	F(C,T)LL20	TAP 2	7.2 / 7.2	9.6 / 9.6	41.6 / 34.6	47.0 / 40.0	52.8 / 43.3	59.5 / 50.0	60A / 45A	60A / 50A

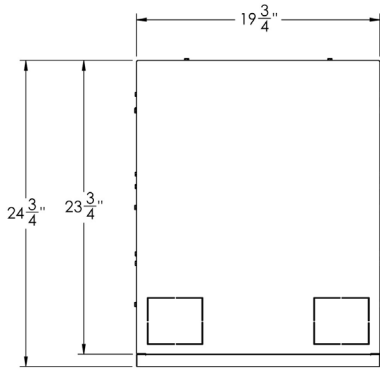
BLOWER DATA														
MODEL	SPEED TAP	MOTOR			CFM V EXTERNAL STATIC									
		HP	AMPS	VOLTAGE	0.1	0.2	0.3	0.4	0.5	0.6	0.7	0.8	0.9	1.0
EF1*20FD (18,000-36,000)	TAP 2	1/2	3.6	240	770	720	670	630	570	510	450	420	370	340
	TAP 3				900	850	810	800	705	660	610	560	510	480
EF2020FD (36,000-60,000)	TAP 2	1	7.0	240	1340	1300	1265	1230	1200	1155	1115	1050	1020	975

\*Dry coil with Filter

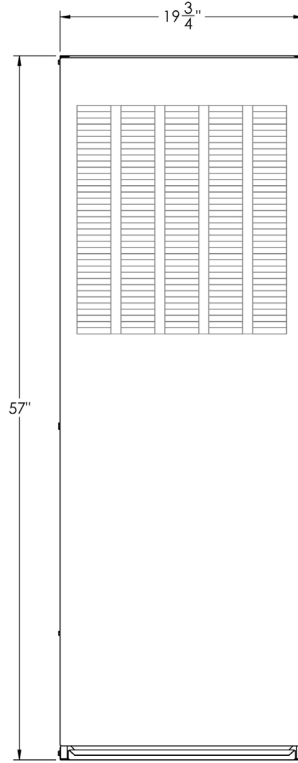
ONE PIECE WRAPPER - CONFIGURATION TABLE					
BROCK AIR MODEL (DEFAULT)	CONFIGURATION (DEFAULT)	RETURN (DEFAULT)	DOOR (DEFAULT)	CONVERTIBLE TO	KIT NEEDED FOR CONVERSION
EF1020FD-MH	DOWNFLOW	FRONT	LOUVERED	DOWNFLOW / FRONT & TOP RETURN – LOUVER DOOR	AEXK-01
EF1520FD-MH				DOWNFLOW / TOP RETURN – SOLID DOOR	AEXK-02
EF2020FD-MH				UPFLOW / BOTTOM RETURN – SOLID DOOR	AEXK-02

### ASK FOR ACIQ

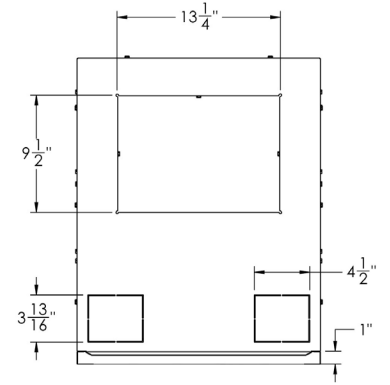
In keeping with its commitment to continuous improvement, ACIQ reserves the right to make changes without notice and incurring obligation.



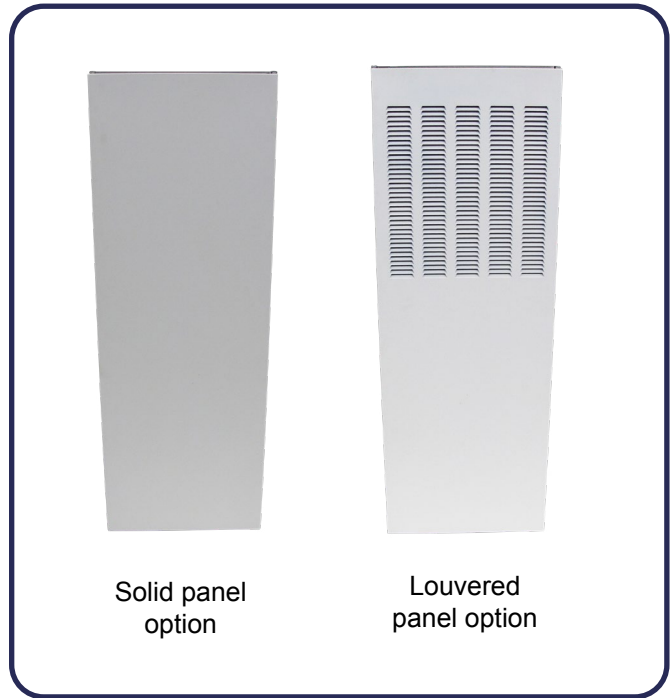
TOP VIEW



FRONT VIEW



BOTTOM VIEW



FILTER SIZE: 18"x20"x1" for all configurations.

**ASK FOR ACiQ**

In keeping with its commitment to continuous improvement, ACiQ reserves the right to make changes without notice and incurring obligation.