

## SUBMITTAL DATA SHEET

| Heat Pump System   |  |
|--|--|
| Location: _____<br>Engineer: _____<br>Submitted to: _____<br>Submitted by: _____<br>Reference: _____ | Approval: _____<br>Date: _____<br>Construction: _____<br>Unit #: _____<br>Drawing #: _____ |

|                    |                |
|--------------------|----------------|
| <b>Set Code</b>    | 22023110001408 |
| Indoor unit code   | 22023111000630 |
| Outdoor unit code  | 22023116000163 |
| <b>Set Model</b>   |                |
| Indoor unit model  | ACIQ-30W-WM    |
| Outdoor unit model | ACIQ-30-EHPB   |
| <b>Certified</b>   | AHRI           |
|                    | UL             |



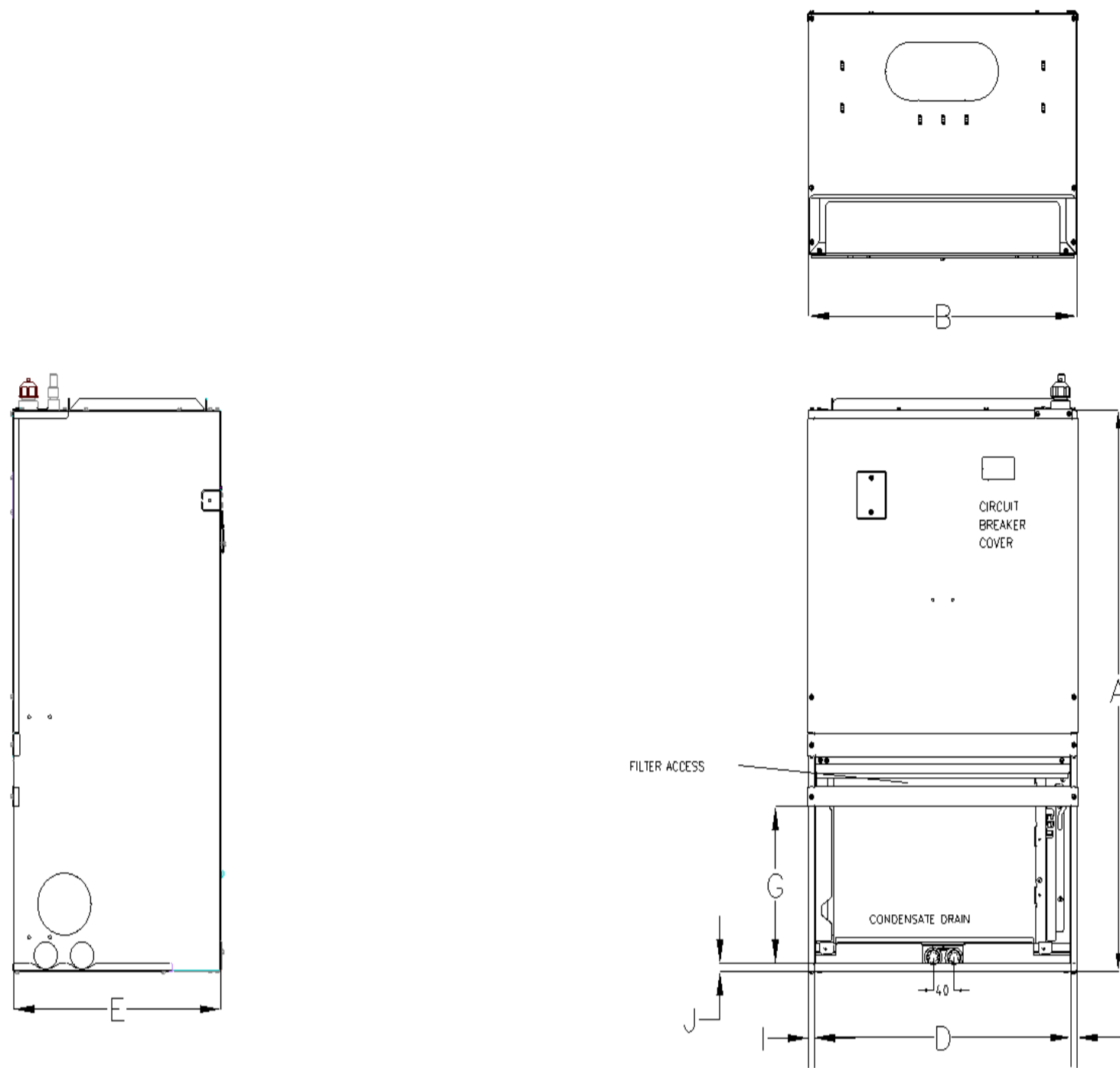
| SYSTEM PERFORMANCE DATA           |             |                     |
|-----------------------------------|-------------|---------------------|
| <b>Power supply</b>               |             |                     |
| Normal Operational Voltage        | (V, Ph, Hz) | 208/230V, 1Ph, 60Hz |
| Voltage Range                     | (V)         | 187-253             |
| <b>Electrical</b>                 |             |                     |
| Minimum circuit ampacity(Outdoor) | (A)         | 23                  |
| Max.fuse(Outdoor)                 | (A)         | 35                  |
| Connection wiring                 |             | //0.5x2             |
| <b>Cooling</b>                    |             |                     |
| Capacity                          | (Btu/h)     | 30000(11200~33600)  |
| Power Input                       | (W)         | 3000(623~3650)      |
| Current                           | (A)         | 13(2.7~16)          |
| SEER2                             | (Btu/W)     | 16.9                |
| EER2                              | (Btu/W)     | 10                  |
| <b>Heating</b>                    |             |                     |
| Capacity                          | (Btu/h)     | 31000(8200~37000)   |
| Power Input                       | (W)         | 2700(585~3350)      |
| Current                           | (A)         | 11.74(2.54~14.6)    |
| HSPF2-4                           | (Btu/W)     | 9                   |
| HSPF2-5                           | (Btu/W)     | 7.0                 |
| COP                               | W/W         | 3.37                |
| Heat at 17F(H32)                  | (Btu/h)     | 19600               |
| Heat at 5F(H42)                   | (Btu/h)     | 25000               |
| COP at 5F(H42)                    | W/W         | 1.8                 |

| REFRIGERANT PIPE DATA          |                             |                                    |
|--------------------------------|-----------------------------|------------------------------------|
| Throttle type                  | Indoor unit<br>Outdoor unit | EEV for cooling<br>EEV for heating |
| Design pressure                | (PSIG)                      | 550/340                            |
| Refrigerant Type               |                             | R410A                              |
| Refrigerant charge             | oz                          | 134.04                             |
| Refrigerant precharge          | (ft)<br>(m)                 | /<br>/                             |
| Additional charge for each ft  | (oz/ft)                     | 0.69                               |
| Additional charge for each m   | (g/m)                       | 65                                 |
| Liquid side/ Gas side(indoor)  | (inch)<br>(mm)              | 3/8" / 3/4"<br>9.52/19             |
| Liquid side/ Gas side(outdoor) | (inch)<br>(mm)              | 3/8" / 3/4"<br>9.52/19             |
| Max. pipe length               | (ft)<br>(m)                 | 164.04<br>50                       |
| Max. difference in level       | (ft)<br>(m)                 | 82.02<br>25                        |
| Connection method              |                             | Flared                             |
| Indoor(cooling)                | (Deg. °F)<br>(Deg. °C)      | 60~90<br>16~32                     |
| Indoor(heating)                | (Deg. °F)<br>(Deg. °C)      | 32~86<br>0~30                      |
| Outdoor(cooling)               | (Deg. °F)<br>(Deg. °C)      | 5~122<br>-15~50                    |
| Outdoor(heating)               | (Deg. °F)<br>(Deg. °C)      | 5~75<br>-15~24                     |

| INDOOR UNIT DATA                      |                |                                   |
|---------------------------------------|----------------|-----------------------------------|
| <b>Indoor fan motor</b>               |                |                                   |
| Model                                 |                | ZKFD-375-10-3                     |
| Qty                                   |                | 1                                 |
| Input                                 | (W)            | /                                 |
| Output                                | (W)            | /                                 |
| RLA                                   | (A)            | 34154.1                           |
| Speed(Hi/Mi/Lo)                       | (r/min)        | /                                 |
| <b>Air flow &amp; Noise level</b>     |                |                                   |
| Indoor air flow (Hi/Med/Lo) (No duct) | (CFM)          | 988.24/894.12/805.88/711.76       |
| Indoor noise level (Hi/Med/Lo)        | [dB(A)]        | 55/50/47                          |
| <b>Dehumidification</b>               | (L/H)          | 3.41                              |
| <b>Indoor unit</b>                    |                |                                   |
| Dimension (WxDxH)                     | (inch)<br>(mm) | 22.01x19.02x40.04<br>559x483x1017 |
| Packing(WxDxH)                        | (inch)<br>(mm) | 24.61x22.83x46.97<br>625x580x1193 |
| Net/Gross weight                      | (lbs.)<br>(kg) | 108.91/132.94<br>49.4/60.3        |
| <b>Accessories</b>                    |                |                                   |
| Adaptor for welding(3/4")             | Qty            | 1                                 |
| Adaptor for welding(3/8")             | Qty            | 1                                 |

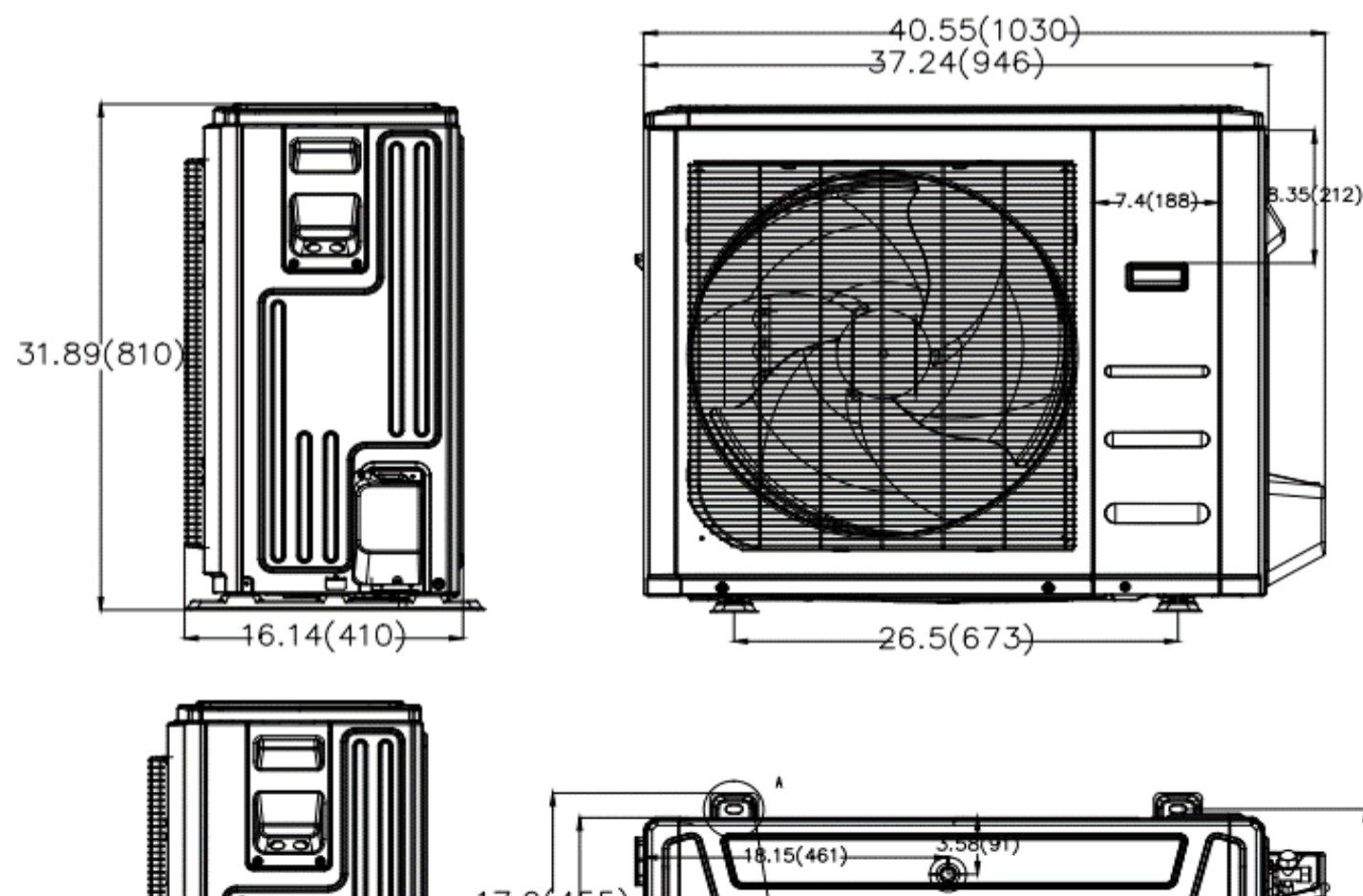
| OUTDOOR UNIT DATA                 |                |                                   |
|-----------------------------------|----------------|-----------------------------------|
| <b>Compressor</b>                 |                |                                   |
| Type                              |                | ROTARY                            |
| Model                             |                | KTF310D43UMT                      |
| Brand                             |                | GMCC                              |
| Capacity                          | (Btu/h)        | 34154                             |
| Input                             | (W)            | 2765                              |
| Rated current (RLA)               | (A)            | 16.5                              |
| Refrigerant oil/oil charge        | (ml)           | VG74/1000                         |
| <b>Outdoor fan motor</b>          |                |                                   |
| Model                             |                | ZKFN-120-8-2                      |
| Qty                               |                | 1                                 |
| Input                             | (W)            | /                                 |
| Output                            | (W)            | /                                 |
| RLA                               | (A)            | 1.35                              |
| Speed                             | (r/min)        | 950/900/500                       |
| <b>Air flow &amp; Noise level</b> |                |                                   |
| Outdoor air flow (Max.)           | (CFM)          | 3000.00                           |
| Outdoor noise level               | [dB(A)]        | 63                                |
| <b>Outdoor unit</b>               |                |                                   |
| Dimension (WxDxH)                 | (inch)<br>(mm) | 37.24x16.14x31.89<br>946x410x810  |
| Packing (WxDxH)                   | (inch)<br>(mm) | 42.91x19.69x34.84<br>1090x500x885 |
| Net/ Gross weight                 | (lbs.)<br>(kg) | 159.83/169.75<br>72.5/77          |
| <b>Accessories</b>                |                |                                   |
| Adaptor for welding(3/4")         | Qty            | 1                                 |
| Adaptor for welding(3/8")         | Qty            | 1                                 |

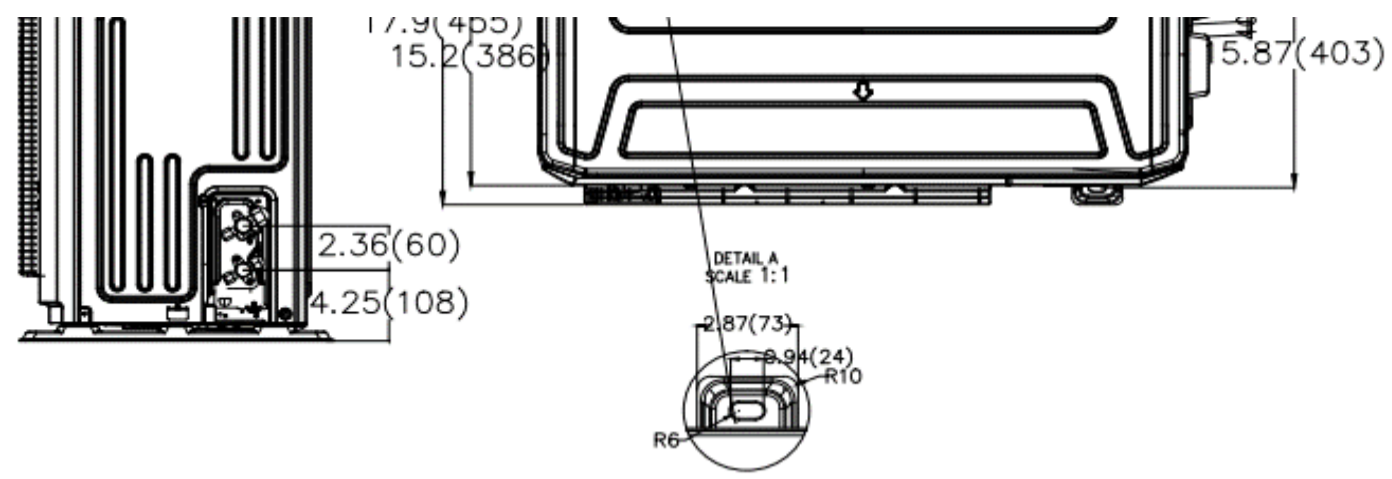
Indoor unit dimension



| Dimensions | Model(Btu/h)                       | 18K/24K |       | 30K/36K |       |
|------------|------------------------------------|---------|-------|---------|-------|
|            |                                    | inch    | mm    | inch    | mm    |
| A          | Model Height                       | 36.5    | 928   | 49      | 1017  |
| B          | Model Width                        | 20.3    | 515   | 21      | 559   |
| C          | Supply Air Opening Width           | 17.4    | 442   | 18.8    | 478.6 |
| D          | Return Air Opening Width           | 19.4    | 493.8 | 21.2    | 537.8 |
| E          | Model Depth                        | 15.7    | 399   | 21      | 483   |
| F          | Supply Air Opening Depth           | 10.4    | 265.2 | 9.3     | 235.4 |
| G          | Return Air Opening Depth           | 10.3    | 261   | 13.1    | 332.5 |
| H          | Supply Air Opening Clearance       | 1.1     | 29.1  | 1.6     | 41    |
| I          | Return Air Opening Side Clearance  | 0.42    | 10.6  | 0.42    | 10.6  |
| J          | Return Air Opening Front Clearance | 0.47    | 12    | 0.63    | 16    |

Outdoor unit dimension





Fan performance

30K

