

## SUBMITTAL DATA SHEET

Heat Pump System	
Location: _____ Engineer: _____ Submitted to: _____ Submitted by: _____ Reference: _____	Approval: _____ Date: _____ Construction: _____ Unit #: _____ Drawing #: _____

<b>Set Code</b>	22023110001409
Indoor unit code	22023111000611
Outdoor unit code	22023116000161
<b>Set Model</b>	
Indoor unit model	ACIQ-24W-WM
Outdoor unit model	ACIQ-24-EHPB
<b>Certified</b>	AHRI
	UL



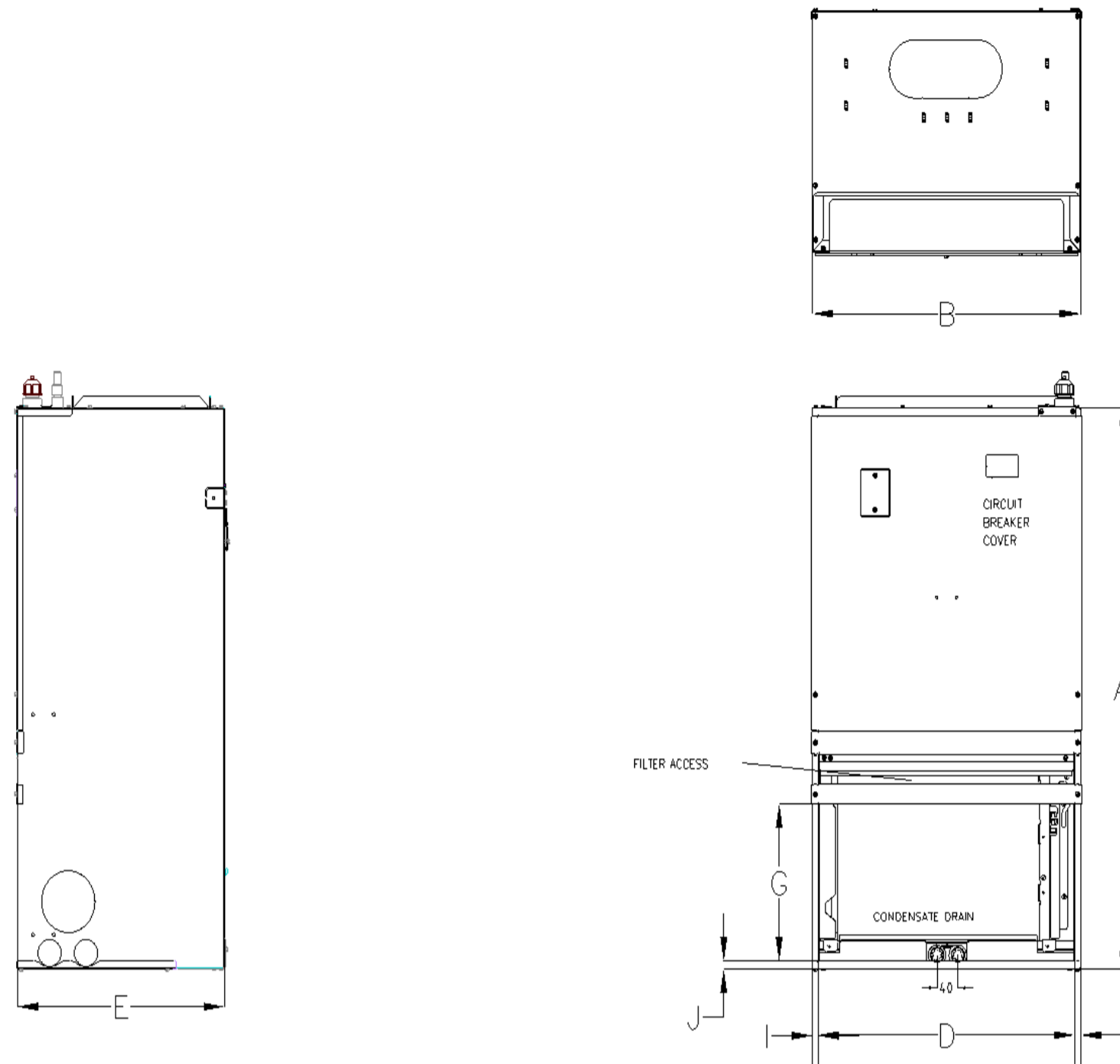
SYSTEM PERFORMANCE DATA		
<b>Power supply</b>		
Normal Operational Voltage	(V, Ph, Hz)	208/230V, 1Ph, 60Hz
Voltage Range	(V)	187-253
<b>Electrical</b>		
Minimum circuit ampacity(Outdoor)	(A)	20.5
Max.fuse(Outdoor)	(A)	35
Connection wiring		//0.5x2
<b>Cooling</b>		
Capacity	(Btu/h)	24000(8900~27000)
Power Input	(W)	2050(468~2690)
Current	(A)	8.91(2.00~12.35)
SEER2	(Btu/W)	17.50
EER2	(Btu/W)	11.70
<b>Heating</b>		
Capacity	(Btu/h)	26000(6500~32400)
Power Input	(W)	2087(445~2850)
Current	(A)	10.5(4.15~13.00)
HSPF2-4	(Btu/W)	10.50
HSPF2-5	(Btu/W)	8.80
COP	W/W	3.65
Heat at 17F(H32)	(Btu/h)	20000
Heat at 5F(H42)	(Btu/h)	24000
COP at 5F(H42)	W/W	2.00

INDOOR UNIT DATA		
<b>Indoor fan motor</b>		
Model		ZKFD-250-10-3
Qty		1
Input	(W)	/
Output	(W)	/
RLA	(A)	26408.9
Speed(Hi/Mi/Lo)	(r/min)	/
<b>Air flow &amp; Noise level</b>		
Indoor air flow (Hi/Med/Lo) (No duct)	(CFM)	823.53/758.82/694.12/629.41
Indoor noise level (Hi/Med/Lo)	[dB(A)]	51/47/45
<b>Dehumidification</b>	(L/H)	2.39
<b>Indoor unit</b>		
Dimension (WxDxH)	(inch)	20.28x15.71x36.54
	(mm)	515x399x928
Packing(WxDxH)	(inch)	22.83x19.49x42.91
	(mm)	580x495x1090
Net/Gross weight	(lbs.)	88.18/109.13
	(kg)	40/49.5
<b>Accessories</b>		
Adaptor for welding(3/4")	Qty	1
Adaptor for welding(3/8")	Qty	1

REFRIGERANT PIPE DATA		
Throttle type	Indoor unit Outdoor unit	EEV for cooling EEV for heating
Design pressure	(PSIG)	550/340
Refrigerant Type		R410A
Refrigerant charge	oz	102.32
Refrigerant precharge	(ft) (m)	/ /
Additional charge for each ft	(oz/ft)	0.69
Additional charge for each m	(g/m)	65
Liquid side/ Gas side(indoor)	(inch) (mm)	3/8" / 3/4" 9.52/19
Liquid side/ Gas side(outdoor)	(inch) (mm)	3/8" / 5/8" 9.52/16
Max. pipe length	(ft) (m)	164.04 50
Max. difference in level	(ft) (m)	82.02 25
Connection method		Flared
Indoor(cooling)	(Deg. °F) (Deg. °C)	60~90 16~32
Indoor(heating)	(Deg. °F) (Deg. °C)	32~86 0~30
Outdoor(cooling)	(Deg. °F) (Deg. °C)	5~122 -15~50
Outdoor(heating)	(Deg. °F) (Deg. °C)	5~75 -15~24

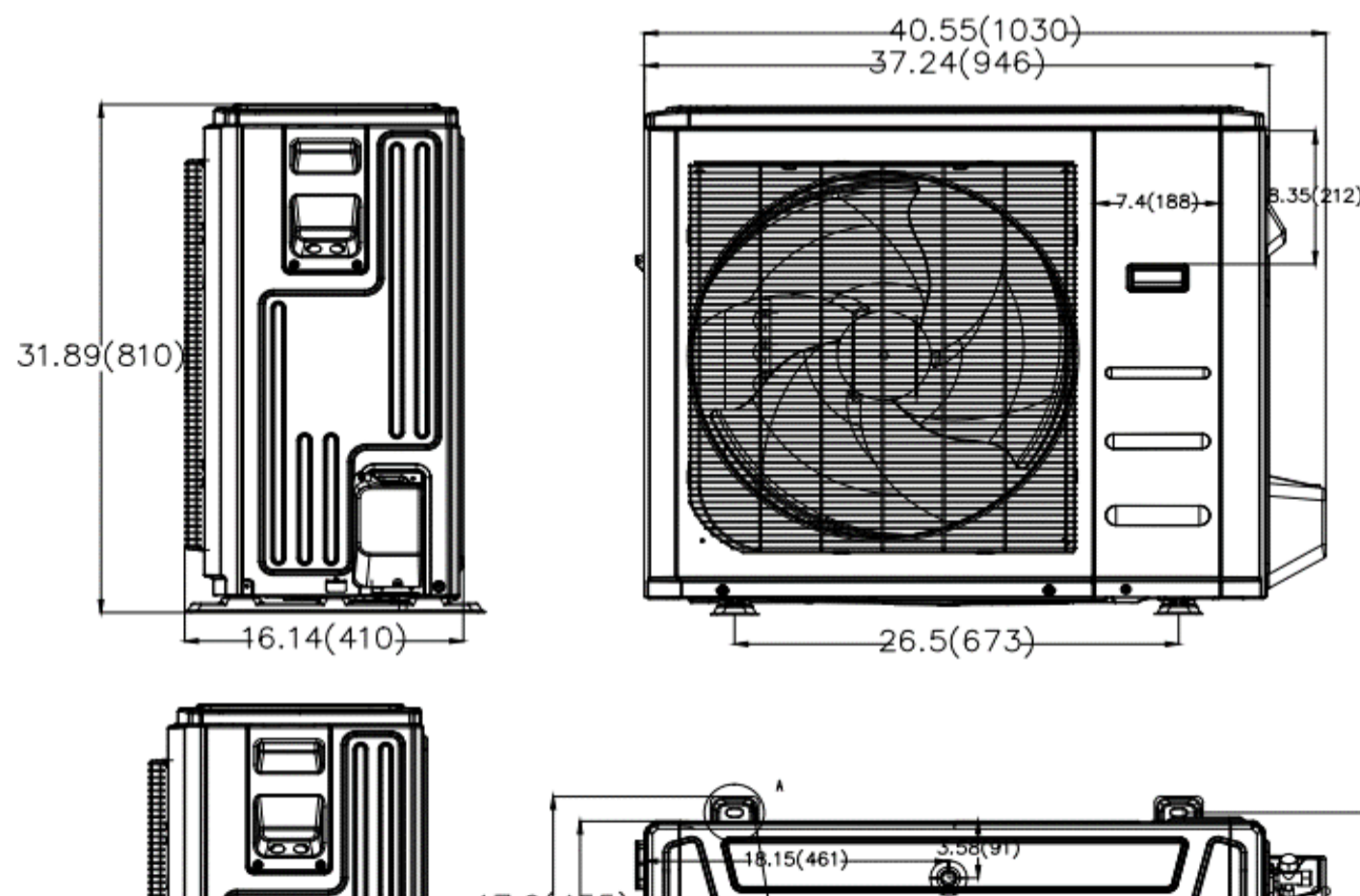
OUTDOOR UNIT DATA		
<b>Compressor</b>		
Type		Twin-ROTARY
Model		KTM240D57UMT
Brand		GMCC
Capacity	(Btu/h)	26409
Input	(W)	2085
Rated current (RLA)	(A)	15
Refrigerant oil/oil charge	(ml)	ESTER OIL VG74 670
<b>Outdoor fan motor</b>		
Model		ZKFN-120-8-2
Qty		1
Input	(W)	/
Output	(W)	/
RLA	(A)	1.35
Speed	(r/min)	950/700/500/400
<b>Air flow &amp; Noise level</b>		
Outdoor air flow (Max.)	(CFM)	3000.00
Outdoor noise level	[dB(A)]	62
<b>Outdoor unit</b>		
Dimension (WxDxH)	(inch) (mm)	37.24x16.14x31.89 946x410x810
Packing (WxDxH)	(inch) (mm)	42.91x19.69x34.84 1090x500x885
Net/ Gross weight	(lbs.) (kg)	136.69/145.50 62/66
<b>Accessories</b>		
Adaptor for welding(3/4")	Qty	1
Adaptor for welding(3/8")	Qty	1
Adaptor (5/8" to 3/4")	Qty	1

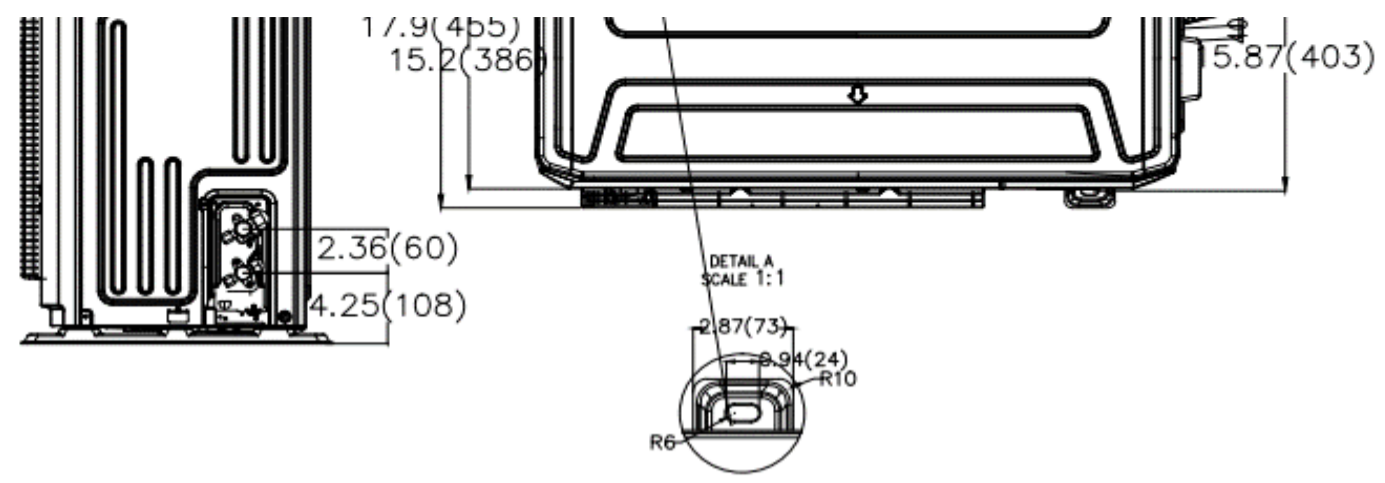
Indoor unit dimension



Dimensions	Model(Btu/h)	18K/24K		30K/36K	
		inch	mm	inch	mm
A	Model Height	36.5	928	49	1017
B	Model Width	20.3	515	21	559
C	Supply Air Opening Width	17.4	442	18.8	478.6
D	Return Air Opening Width	19.4	493.8	21.2	537.8
E	Model Depth	15.7	399	21	483
F	Supply Air Opening Depth	10.4	265.2	9.3	235.4
G	Return Air Opening Depth	10.3	261	13.1	332.5
H	Supply Air Opening Clearance	1.1	29.1	1.6	41
I	Return Air Opening Side Clearance	0.42	10.6	0.42	10.6
J	Return Air Opening Front Clearance	0.47	12	0.63	16

Outdoor unit dimension





Fan performance

