

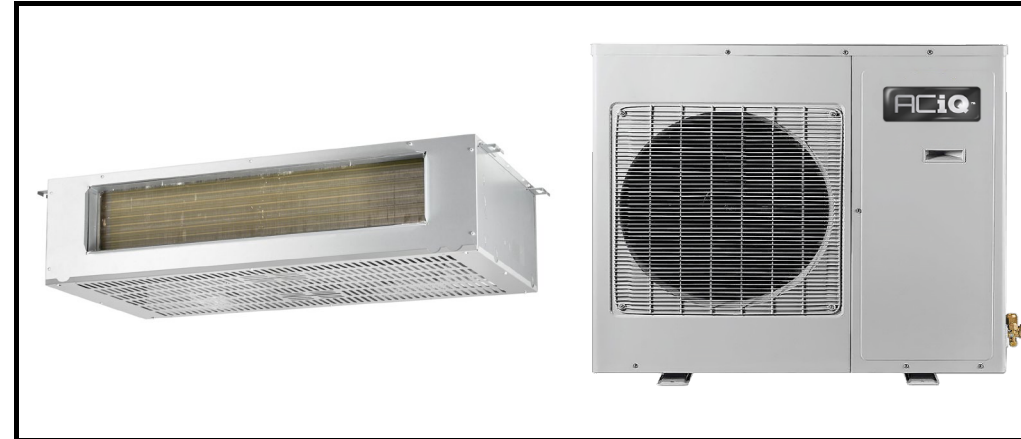


PANCAKE Heat Pump System	
Location: _____ Engineer: _____ Submitted to: _____ Submitted by: _____ Reference: _____	Approval: _____ Date: _____ Construction: _____ Unit #: _____ Drawing #: _____

Set Code	/
Indoor unit code	22023011005475
Outdoor unit code	22023116000082
Set Model	
Indoor unit model	ACIQ-36W-P
Outdoor unit model	ACIQ-36-EHPB
Certified	AHRI  UL 



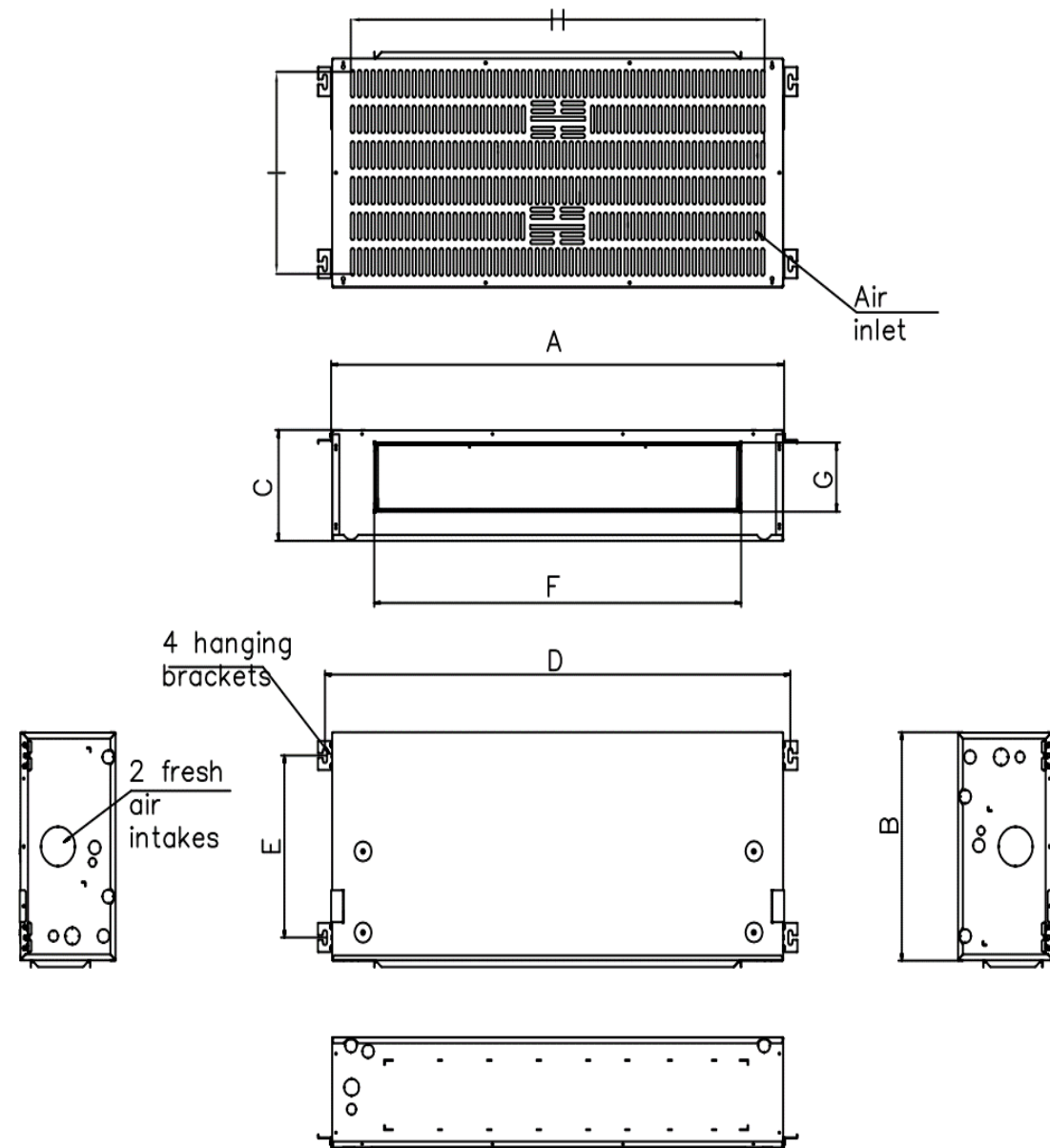
SYSTEM PERFORMANCE DATA		
Power supply		
Normal Operational Voltage	(V, Ph, Hz)	208/230V, 1Ph, 60Hz
Voltage Range	(V)	187-253
Electrical		
Minimum circuit ampacity(Outdoor)	(A)	24.0
Max.fuse(Outdoor)	(A)	40.0
Connection wiring		14AWG*2 Stranded, shielded
Cooling		
Capacity	(Btu/h)	36000
Power Input	(W)	/
Current	(A)	/
SEER2	(Btu/W)	16.0
EER2	(Btu/W)	9.5
Heating		
Capacity	(Btu/h)	36000
Power Input	(W)	/
Current	(A)	/
HSPF2-4	(Btu/W)	8.0
HSPF2-5	(Btu/W)	6.0
COP	W/W	/
Heat at 17F(H32)	(Btu/h)	19000
Heat at 5F(H42)	(Btu/h)	20000
COP at 5F(H42)	W/W	1.80

REFRIGERANT PIPE DATA		
Throttle type	Indoor unit Outdoor unit	EEV for cooling EEV for heating
Design pressure	(PSIG)	550/340
Refrigerant Type		R410A
Refrigerant charge	oz	130.51
Refrigerant precharge	(ft) (m)	25.0 7.5
Additional charge for each ft	(oz/ft)	0.69
Additional charge for each m	(g/m)	65.0
Liquid side/ Gas side(indoor)	(inch) (mm)	3/8" / 3/4" 9.52/19
Liquid side/ Gas side(outdoor)	(inch) (mm)	3/8" / 3/4" 9.52/19
Max. pipe length	(ft) (m)	213.3 65.0
Max. difference in level	(ft) (m)	98.4 30.0
Connection method		Flared
Indoor(cooling)	(Deg. °F) (Deg. °C)	60~90 16~32
Indoor(heating)	(Deg. °F) (Deg. °C)	32~86 0~30
Outdoor(cooling)	(Deg. °F) (Deg. °C)	5~122 -15~50
Outdoor(heating)	(Deg. °F) (Deg. °C)	-13~75 -25~24

INDOOR UNIT DATA		
Indoor fan motor		
Model		ZKFD-375-10-2
Qty		1
Input	(W)	/
Output	(W)	/
RLA	(A)	4.0
Speed(Hi/Mi/Lo)	(r/min)	1550/1350/910
Air flow & Noise level		
Indoor air flow (Hi/Med/Lo) (No duct)	(CFM)	1176.47/1000.00/794.12/617.65
Indoor noise level (Hi/Med/Lo)	[dB(A)]	60/56/53
Dehumidification	(L/H)	0
Indoor unit		
Dimension (WxDxH)	(inch) (mm)	62.13x23.33x10.93 1578x592.7x277.6
Packing(WxDxH)	(inch) (mm)	66.14x26.77x13.58 1680x680x345
Net/Gross weight	(lbs.) (kg)	144.84/156.75 65.77/71.1
Accessories		
Adaptor for welding(3/4")	Qty	1
Adaptor for welding(3/8")	Qty	1

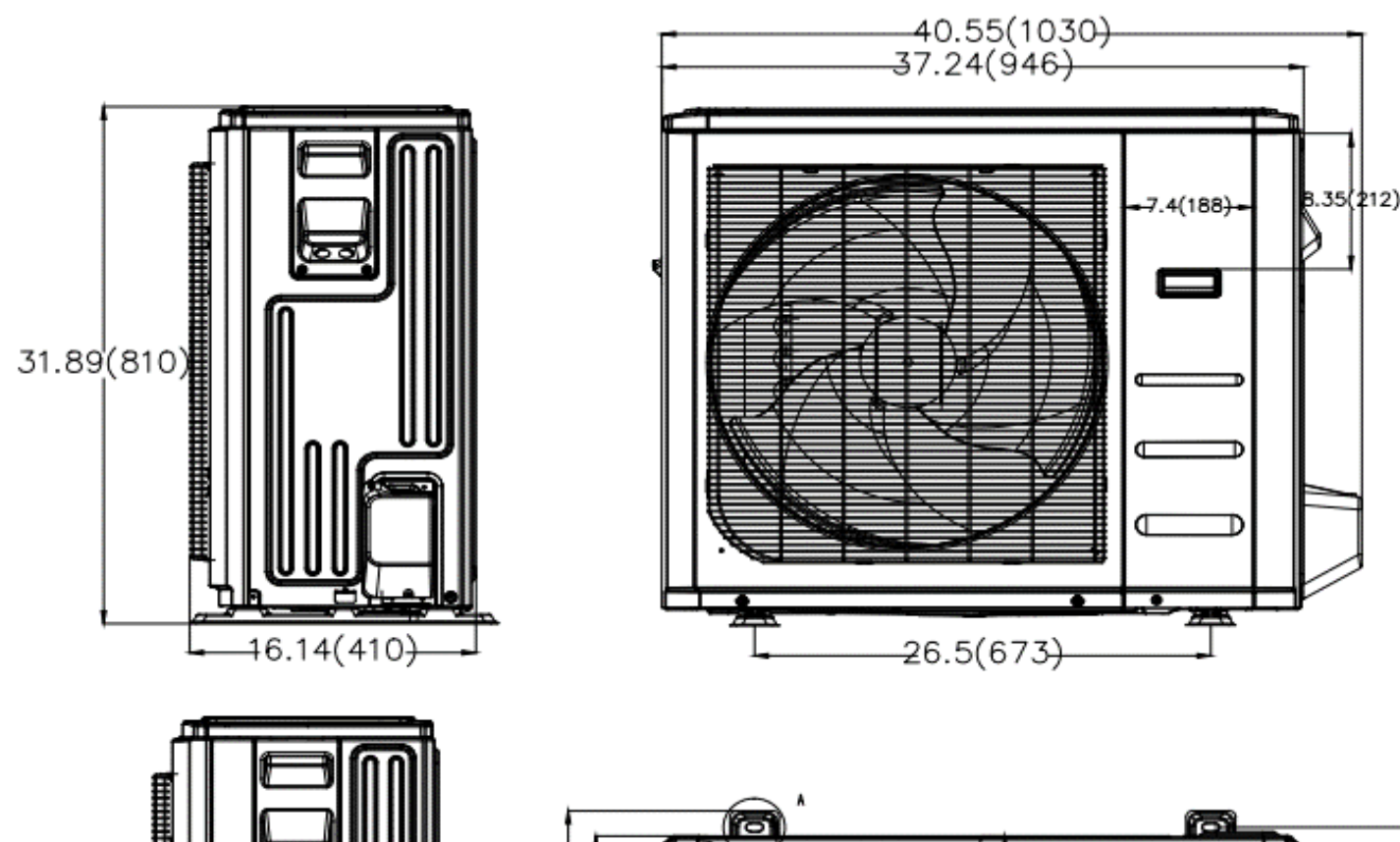
OUTDOOR UNIT DATA		
Compressor		
Type		ROTARY
Model		KTF250D22UMT
Brand		GMCC
Capacity	(Btu/h)	27620
Input	(W)	2200
Rated current (RLA)	(A)	17.6
Refrigerant oil/oil charge	(ml)	VG74/670
Outdoor fan motor		
Model		ZKFN-120-8-2
Qty		1
Input	(W)	/
Output	(W)	/
RLA	(A)	1.5
Speed	(r/min)	1150/1050/900/850
Air flow & Noise level		
Outdoor air flow (Max.)	(CFM)	2235
Outdoor noise level	[dB(A)]	63.0
Outdoor unit		
Dimension (WxDxH)	(inch) (mm)	37.24x16.14x31.89 946x410x810
Packing (WxDxH)	(inch) (mm)	42.91x19.69x34.84 1090x500x885
Net/ Gross weight	(lbs.) (kg)	151.68/161.16 68.8/73.1
Accessories		
Adaptor for welding(3/4")	Qty	1
Adaptor for welding(3/8")	Qty	1
Adaptor (5/8" to 3/4")	Qty	1

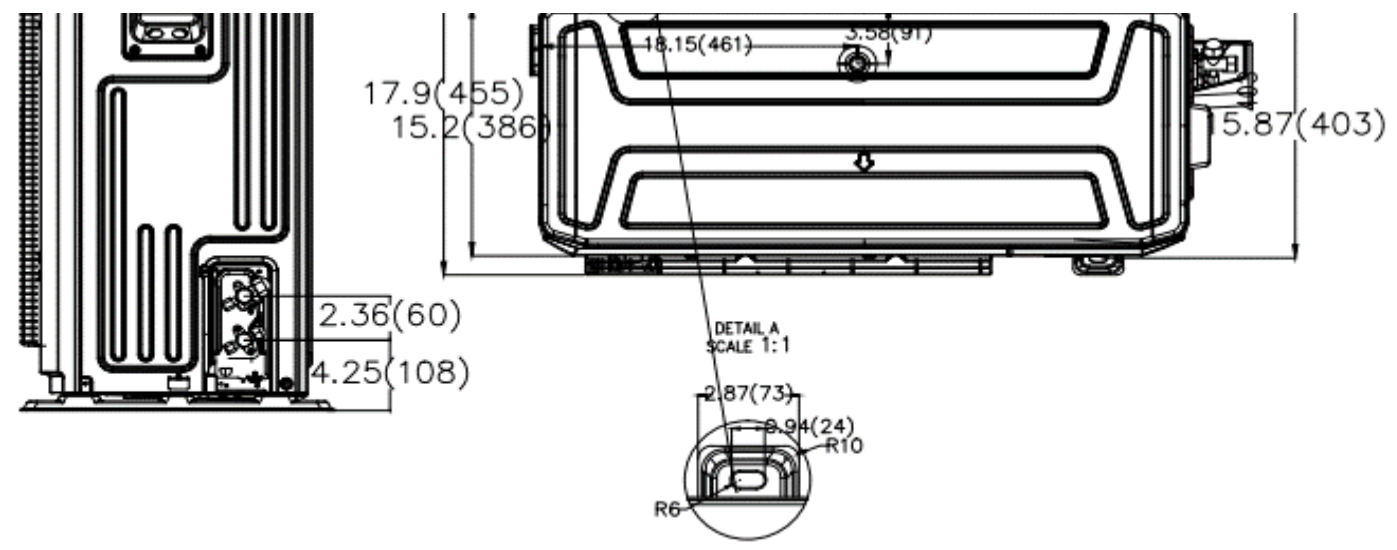
Indoor unit dimension



Dimensions	Model(Btu/h)	18K	24K	30K	36K
		inch	inch	inch	inch
A	Model Length	43-1/4	49-1/8	55-1/4	62-1/8
B	Model Width	23-5/16	23-5/16	23-5/16	23-5/16
C	Model Height	10-15/16	10-15/16	10-15/16	10-15/16
D	MOUNTED LUG Length	41-5/8	47-1/2	53-5/8	60-1/2
E	MOUNTED LUG width	18-1/8	18-1/8	18-1/8	18-1/8
F	AIR OUTLET LENGTH	30-5/16	36-3/16	42-5/16	49-3/16
G	AIR OUTLET WIDTH	6-7/8	6-7/8	6-7/8	6-7/8
H	AIR RETURN LENGTH	38-3/8	44-5/16	50-3/8	57-1/4
I	AIR RETURN WIDTH	21-1/8	21-1/8	21-1/8	21-1/8

Outdoor unit dimension





36K

