

## SUBMITTAL DATA SHEET

### A-Coil Heat Pump System

Location: \_\_\_\_\_  
 Engineer: \_\_\_\_\_  
 Submitted to: \_\_\_\_\_  
 Submitted by: \_\_\_\_\_  
 Reference: \_\_\_\_\_

Approval: \_\_\_\_\_  
 Date: \_\_\_\_\_  
 Construction: \_\_\_\_\_  
 Unit #: \_\_\_\_\_  
 Drawing #: \_\_\_\_\_

**Set Code**  
 Indoor unit code 2202311000788  
 Outdoor unit code 2202311000493  
 Outdoor unit code 2202311600082

**Set Model**  
 Indoor unit model ACIQ-36-ACL  
 Outdoor unit model ACIQ-36-EHPB

**Certified**  
 AHRI   
 UL 



### SYSTEM PERFORMANCE DATA

<b>Power supply</b>		
Normal Operational Voltage	(V, Ph, Hz)	208/230V,1Ph, 60Hz
Voltage Range	(V)	187-253
<b>Electrical</b>		
Minimum circuit ampacity(Outdoor)	(A)	24.0
Max.fuse(Outdoor)	(A)	40.0
Connection wiring		N/A
<b>Cooling</b>		
Capacity	(Btu/h)	36000(8000~38000)
Power Input	(W)	3875(520~4150)
Current	(A)	16.85(2.26~18)
SEER2	(Btu/W)	14.4
EER2	(Btu/W)	9.3
<b>Heating</b>		
Capacity	(Btu/h)	35000(8000~40000)
Power Input	(W)	3216(600~3100)
Current	(A)	13.98(2.61~13.5)
HSPF2-4	(Btu/W)	8.0
HSPF2-5	(Btu/W)	6.2
COP	W/W	3.19
Heat at 17F(H32)	(Btu/h)	19800
Heat at 5F(H42)	(Btu/h)	20800
COP at 5F(H42)	W/W	1.90

### REFRIGERANT PIPE DATA

Throttle type	Indoor unit	TXV
	Outdoor unit	EEV for heating
Design pressure	(PSIG)	550/340
Refrigerant Type		R410A
Refrigerant charge	oz	130.51
	(ft)	25.0
Refrigerant precharge	(m)	7.5
Additional charge for each ft	(oz/ft)	0.69
Additional charge for each m	(g/m)	65.0
Liquid side/ Gas side(indoor)	(inch)	3/8" / 3/4"
	(mm)	9.52/19
Liquid side/ Gas side(outdoor)	(inch)	3/8" / 3/4"
	(mm)	9.52/19
Max. pipe length	(ft)	213.3
	(m)	65.0
Max. difference in level	(ft)	98.4
	(m)	30.0
Connection method		Flared
Indoor(cooling)	(Deg. °F)	60~90
	(Deg. °C)	16~32
Indoor(heating)	(Deg. °F)	32~86
	(Deg. °C)	0~30
Outdoor(cooling)	(Deg. °F)	5~122
	(Deg. °C)	-15~50
Outdoor(heating)	(Deg. °F)	-13~75
	(Deg. °C)	-25~24

### INDOOR UNIT DATA

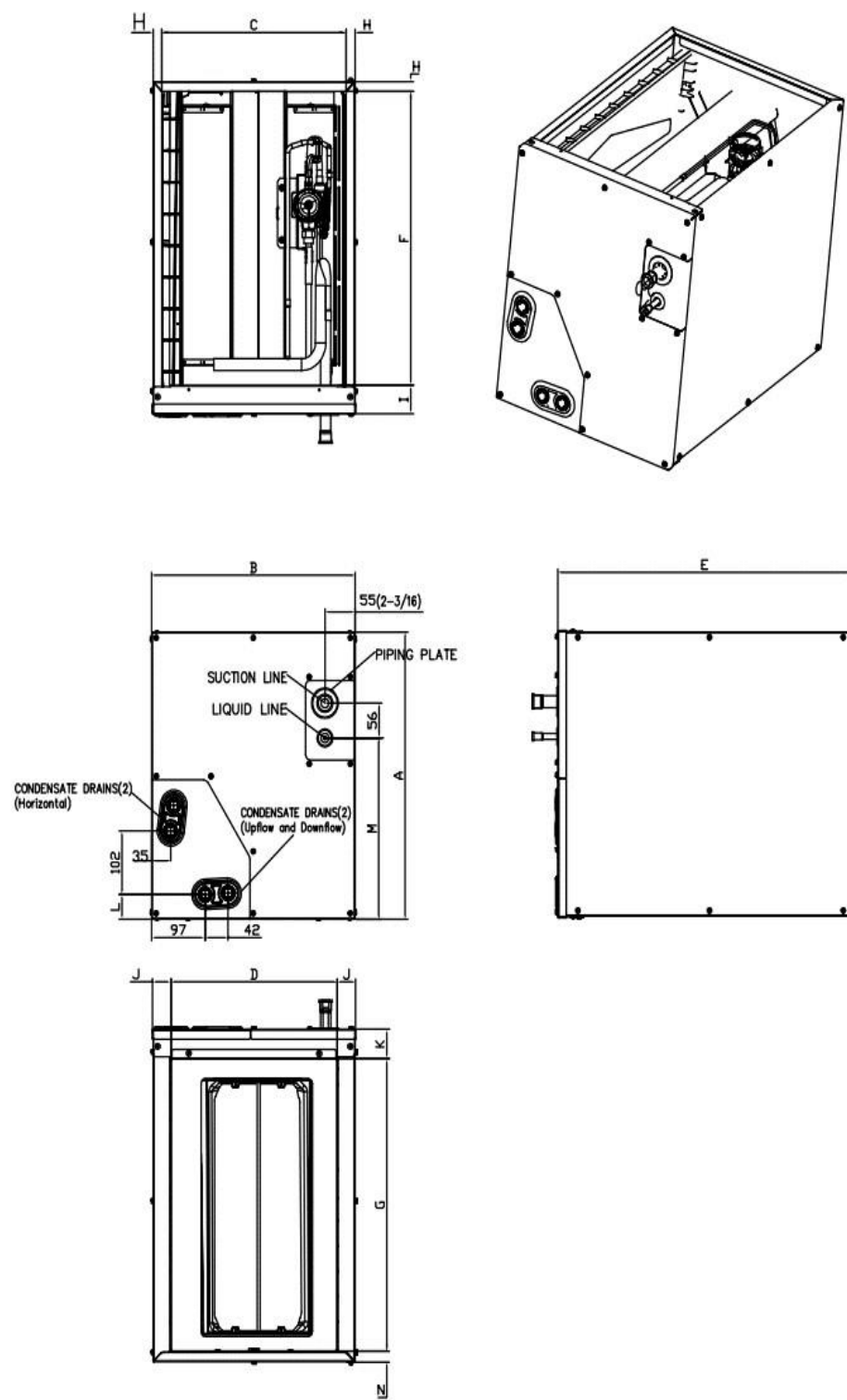
IRV	inch^3	106.90
Air flow	SCFM	960
Pressure drop	Pa	65.10
	In. wg.	0.26
<b>Air flow &amp; Noise level</b>		
Indoor air flow (Hi/Med/Lo) (No duct)	(CFM)	//882.35///
Indoor noise level (Hi/Med/Lo)	[dB(A)]	0/0/0
Dehumidification	(L/H)	/
<b>Indoor unit</b>		
Dimension (WxDxH)	(inch)	
	(mm)	533x533x609
Packing(WxDxH)	(inch)	24.02x26.18x26.38
	(mm)	610x665x670
Net/Gross weight	(lbs.)	66.58/77.16
	(kg)	30.2/35

### OUTDOOR UNIT DATA

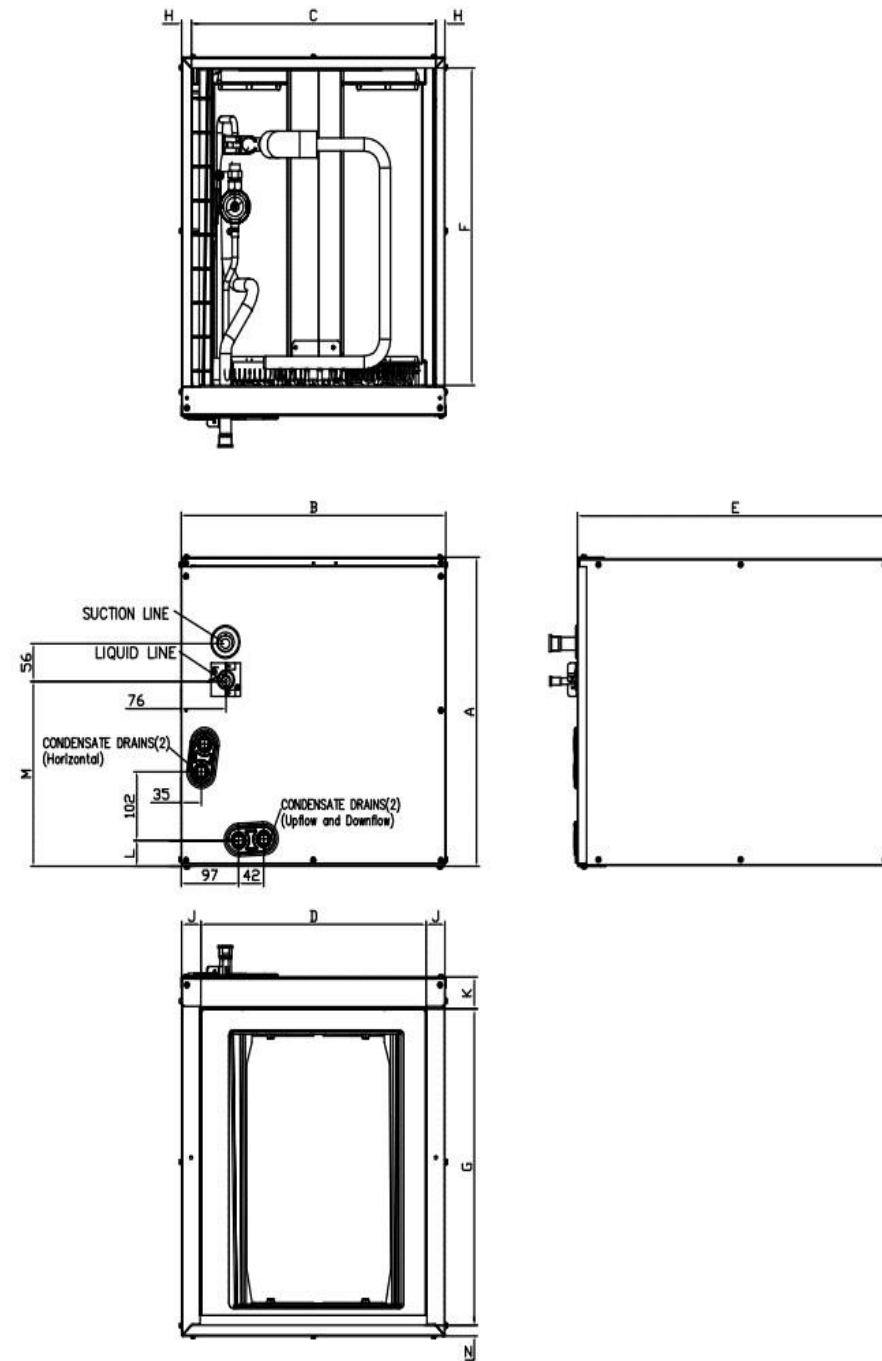
<b>Compressor</b>		
Type		ROTARY
Model		KTF250D22UMT
Brand		GMCC
Capacity	(Btu/h)	27620
Input	(W)	2200
Rated current (RLA)	(A)	17.6
Refrigerant oil/oil charge	(ml)	VG74/670
<b>Outdoor fan motor</b>		
Model		ZKFN-120-8-2
Qty		1
Input	(W)	150.0
Output	(W)	120
RLA	(A)	1.5
Speed	(r/min)	1150/1050/900/850
<b>Air flow &amp; Noise level</b>		
Outdoor air flow (Max.)	(CFM)	2235
Outdoor noise level	[dB(A)]	61.5
<b>Outdoor unit</b>		
Dimension (WxDxH)	(inch)	37.24x16.14x31.89
	(mm)	946x410x810
Packing (WxDxH)	(inch)	42.91x19.69x34.84
	(mm)	1090x500x885
Net/ Gross weight	(lbs.)	151.68/161.16
	(kg)	68.8/73.1

Indoor unit dimension

NEW PANEL STYLE



OLD PANEL STYLE



Dimensions	KV-14F-A		KV-14F-B		KV-17F-A		KV-17F-B		KV-21F-A		KV-21F-B		KV-24F-A	
	NEW PANEL STYLE		NEW PANEL STYLE		NEW PANEL STYLE		OLD PANEL STYLE		OLD PANEL STYLE		NEW PANEL STYLE		OLD PANEL STYLE	
	18K/20K/22K/24K	30K(未投产)	30K/36K	18K/24K	30K/36K/48K	48K	60K							
Model(Btu/h)	inch	mm	inch	mm	inch	mm	inch	mm	inch	mm	inch	mm	inch	mm
A Model Height	18	457	23-1/2	598	23-1/2	599	18	461	24	609	28	711	28	711
B Model Width	14-1/2	368	14-1/2	368	17-1/2	445	17-1/2	445	21	533	21	533	24-1/2	622
C Supply Air Opening Width	13-1/4	336	13-1/4	336	16-3/16	411	16-3/16	411	19-3/4	502	19-3/4	502	23-1/4	591
D Return Air Opening Width	12	303	12	303	15-1/8	384	15-1/8	384	19-1/2	496	19-1/2	496	23	585
E Model Depth	21	534	21	534	21	533	21	533	21	533	21	533	21	533
F Supply Air Opening Depth	18-5/8	473	18-5/8	473	18-5/8	473	18-5/8	473	18-5/8	473	18-5/8	473	18-5/8	473
G Return Air Opening Depth	18-1/2	471	18-1/2	471	18	458	18	458	18-1/2	470	18-1/2	470	18-1/2	470
H Supply Air Opening Side Clearance	5/8	16	5/8	16	5/8	16	5/8	16	5/8	16	5/8	16	5/8	16
I Supply Air Opening Front Clearance	1-3/4	45	1-3/4	45	1-3/4	45	1-3/4	45	1-3/4	45	1-3/4	45	1-3/4	45
J Return Air Opening Side Clearance	5/8	16	5/8	16	1-3/16	30	1-3/16	30	3/4	19	3/4	19	3/4	19
K Return Air Opening Front Clearance	1-13/16	46	1-13/16	46	1-13/16	46	1-13/16	46	1-13/16	46	1-13/16	46	1-13/16	46
L Condensate Drains Height	1-9/16	40	1-9/16	40	1-7/16	37	1-7/16	37	2-1/8	54	2-1/8	54	2-1/8	54
M Liquid Line Height	11-1/2	292	11-1/2	292	16-1/2	418	10-7/8	276	16-5/16	414	21	533	20-1/4	514
N Return Air Opening Side Clearance	3/4	19	3/4	19	3/4	19	1-3/16	30	3/4	19	3/4	19	3/4	19

Outdoor unit dimension

