




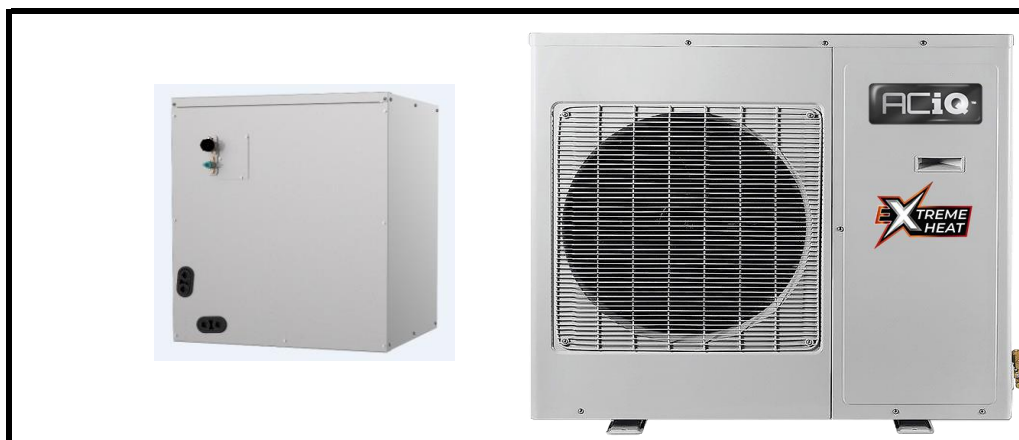
## SUBMITTAL DATA SHEET

### A-Coil Heat Pump System

Location: \_\_\_\_\_  
 Engineer: \_\_\_\_\_  
 Submitted to: \_\_\_\_\_  
 Submitted by: \_\_\_\_\_  
 Reference: \_\_\_\_\_

Approval: \_\_\_\_\_  
 Date: \_\_\_\_\_  
 Construction: \_\_\_\_\_  
 Unit #: \_\_\_\_\_  
 Drawing #: \_\_\_\_\_

<b>Set Code</b>	22023110001489
Indoor unit code	22023111000670
Outdoor unit code	22023116000161
<b>Set Model</b>	
Indoor unit model	ACIQ-24-ACL-14
Outdoor unit model	ACIQ-24-HPB
<b>Certified</b>	  



### SYSTEM PERFORMANCE DATA

<b>Power supply</b>		
Normal Operational Voltage	(V, Ph, Hz)	208/230V,1Ph, 60Hz
Voltage Range	(V)	187-253
<b>Electrical</b>		
Minimum circuit ampacity(Outdoor)	(A)	20.0
Max.fuse(Outdoor)	(A)	35.0
Connection wiring		N/A
<b>Cooling</b>		
Capacity	(Btu/h)	24000(9900~27000)
Power Input	(W)	2240(380~2700)
Current	(A)	9.0(2.58~10.8)
SEER2	(Btu/W)	16.1
EER2	(Btu/W)	10.7
<b>Heating</b>		
Capacity	(Btu/h)	25000(9000~34000)
Power Input	(W)	2207(500~3260)
Current	(A)	8.7(2.15~13.2)
HSPF2-4	(Btu/W)	9.8
HSPF2-5	(Btu/W)	7.8
COP	W/W	3.32
Heat at 17F(H32)	(Btu/h)	22400
Heat at 5F(H42)	(Btu/h)	20000
COP at 5F(H42)	W/W	2.00

### REFRIGERANT PIPE DATA

Throttle type	Indoor unit	TXV
	Outdoor unit	EEV for heating
Design pressure	(PSIG)	550/340
Refrigerant Type		R410A
Refrigerant charge	oz	102.32
Refrigerant precharge	(ft)	25.0
	(m)	7.5
Additional charge for each ft	(oz/ft)	0.69
Additional charge for each m	(g/m)	65.0
Liquid side/ Gas side(indoor)	(inch)	3/8" / 3/4"
	(mm)	9.52/19
Liquid side/ Gas side(outdoor)	(inch)	3/8" / 3/4"
	(mm)	9.52/19
Max. pipe length	(ft)	164.0
	(m)	50.0
Max. difference in level	(ft)	82.0
	(m)	25.0
Connection method		Flared
Indoor(cooling)	(Deg. °F)	60~90
	(Deg. °C)	16~32
Indoor(heating)	(Deg. °F)	32~86
	(Deg. °C)	0~30
Outdoor(cooling)	(Deg. °F)	5~122
	(Deg. °C)	-15~50
Outdoor(heating)	(Deg. °F)	-22~75
	(Deg. °C)	-30~24

### INDOOR UNIT DATA

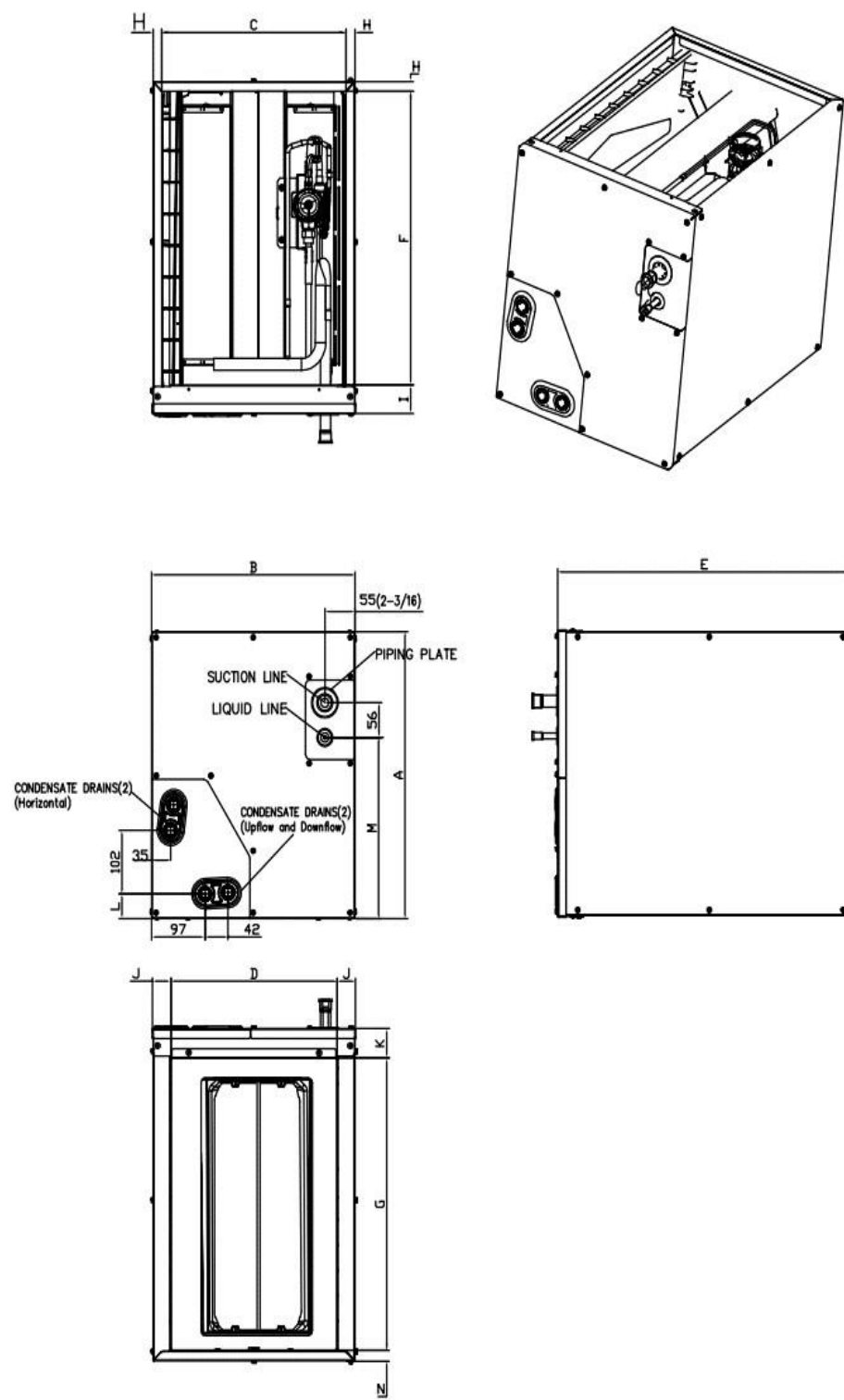
IRV	inch^3	58.30
Air flow	SCFM	700
Pressure drop	Pa	63.00
	In. wg.	0.25
<b>Air flow &amp; Noise level</b>		
Indoor air flow (Hi/Med/Lo) (No duct)	(CFM)	//705.88///
Indoor noise level (Hi/Med/Lo)	[dB(A)]	0/0/0
Dehumidification	(L/H)	3.05
<b>Indoor unit</b>		
Dimension (WxDxH)	(inch)	21.02x14.49x17.99
	(mm)	534x368x457
Packing(WxDxH)	(inch)	17.60x26.06x20.55
	(mm)	447x662x522
Net/Gross weight	(lbs.)	41.67/46.52
	(kg)	18.9/21.1

### OUTDOOR UNIT DATA

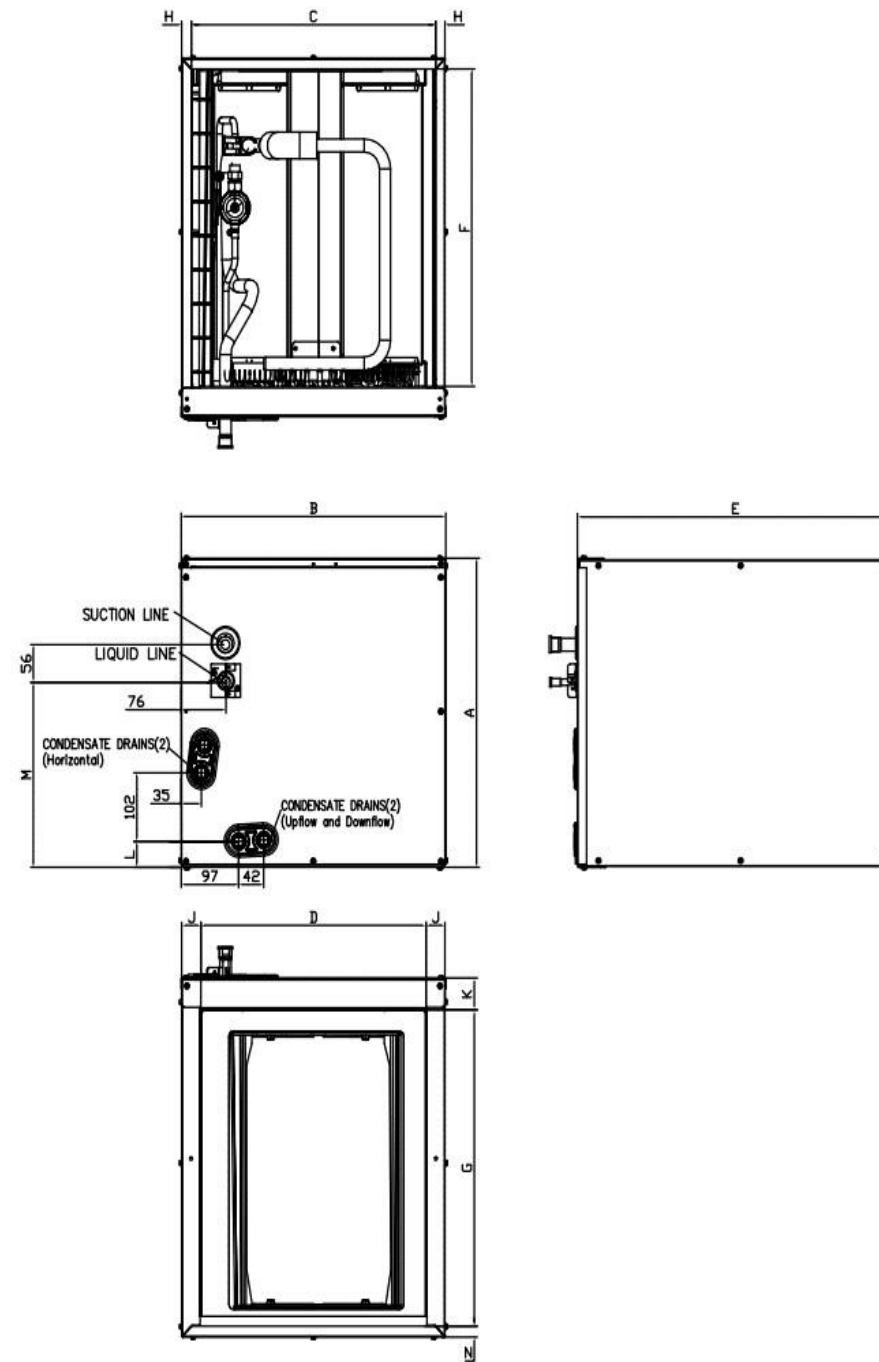
<b>Compressor</b>		
Type		Twin-ROTARY
Model		KTM240D57UMT
Brand		GMCC
Capacity	(Btu/h)	26409
Input	(W)	2085
Rated current (RLA)	(A)	15
Refrigerant oil/oil charge	(ml)	ESTER OIL VG74 670
<b>Outdoor fan motor</b>		
Model		ZKFN-120-8-2
Qty		1
Input	(W)	150.0
Output	(W)	120
RLA	(A)	1.4
Speed	(r/min)	950/700/500/400
<b>Air flow &amp; Noise level</b>		
Outdoor air flow (Max.)	(CFM)	3000
Outdoor noise level	[dB(A)]	63.5
<b>Outdoor unit</b>		
Dimension (WxDxH)	(inch)	37.24x16.14x31.89
	(mm)	946x410x810
Packing (WxDxH)	(inch)	42.91x19.69x34.84
	(mm)	1090x500x885
Net/ Gross weight	(lbs.)	136.69/145.50
	(kg)	62/66

Indoor unit dimension

NEW PANEL STYLE



OLD PANEL STYLE



Dimensions	Model(Btu/h)	KV-14F-A		KV-14F-B		KV-17F-A		KV-17F-B		KV-21F-A		KV-21F-B		KV-24F-A	
		NEW PANEL STYLE		NEW PANEL STYLE		NEW PANEL STYLE		OLD PANEL STYLE		OLD PANEL STYLE		NEW PANEL STYLE		OLD PANEL STYLE	
		18K/20K/22K/24K	30K(未投产)	30K/36K	18K/24K	30K/36K/48K	48K	60K							
A	Model Height	18	457	23-1/2	598	23-1/2	599	18	461	24	609	28	711	28	711
B	Model Width	14-1/2	368	14-1/2	368	17-1/2	445	17-1/2	445	21	533	21	533	24-1/2	622
C	Supply Air Opening Width	13-1/4	336	13-1/4	336	16-3/16	411	16-3/16	411	19-3/4	502	19-3/4	502	23-1/4	591
D	Return Air Opening Width	12	303	12	303	15-1/8	384	15-1/8	384	19-1/2	496	19-1/2	496	23	585
E	Model Depth	21	534	21	534	21	533	21	533	21	533	21	533	21	533
F	Supply Air Opening Depth	18-5/8	473	18-5/8	473	18-5/8	473	18-5/8	473	18-5/8	473	18-5/8	473	18-5/8	473
G	Return Air Opening Depth	18-1/2	471	18-1/2	471	18	458	18	458	18-1/2	470	18-1/2	470	18-1/2	470
H	Supply Air Opening Side Clearance	5/8	16	5/8	16	5/8	16	5/8	16	5/8	16	5/8	16	5/8	16
I	Supply Air Opening Front Clearance	1-3/4	45	1-3/4	45	1-3/4	45	1-3/4	45	1-3/4	45	1-3/4	45	1-3/4	45
J	Return Air Opening Side Clearance	5/8	16	5/8	16	1-3/16	30	1-3/16	30	3/4	19	3/4	19	3/4	19
K	Return Air Opening Front Clearance	1-13/16	46	1-13/16	46	1-13/16	46	1-13/16	46	1-13/16	46	1-13/16	46	1-13/16	46
L	Condensate Drains Height	1-9/16	40	1-9/16	40	1-7/16	37	1-7/16	37	2-1/8	54	2-1/8	54	2-1/8	54
M	Liquid Line Height	11-1/2	292	11-1/2	292	16-1/2	418	10-7/8	276	16-5/16	414	21	533	20-1/4	514
N	Return Air Opening Side Clearance	3/4	19	3/4	19	3/4	19	1-3/16	30	3/4	19	3/4	19	3/4	19

Outdoor unit dimension

