



Submittal Data Sheet

Indoor Unit Model#: ACiQ-18-PAH
Outdoor Unit Model#: ACiQ-18-HPD

Air Handler Heat Pump System

| | |
|---------------|---------------|
| Location: | Approval: |
| Engineer: | Date: |
| Submitted to: | Construction: |
| Submitted by: | Unit #: |
| Reference: | Drawing #: |



| INDOOR UNIT SPECIFICATIONS | | |
|---|------|-------------------------------------|
| ESP (inWG) | | 0~1.2 |
| Indoor Air Flow (Turbo/H/M/L/Si) (CFM) | | 618.0 / 576.8 / 529.7 / 488.5 / N/A |
| Indoor Noise Level (Turbo/H/M/L/Si) (dBA) | | N/A / 42.5 / 40.5 / 37 / N/A |
| Dimension (W×D×H) | inch | 14.49 x 21.50 x 49.72 |
| | mm | 368.0 x 546.0 x 1263 |
| Package (W×D×H) | inch | 52.95 x 17.52 x 31.10 |
| | mm | 1345 x 445 x 790 |
| Net/Gross Weight | lbs | 123.02/154.76 |
| | kg | 55.8/70.2 |

| OUTDOOR UNIT SPECIFICATIONS | | |
|------------------------------|------|-----------------------|
| Compressor Type | | ROTARY |
| Compressor Model | | KTM240D46UKT2 |
| Refrigerant | | R454B |
| Refrigerant Oil Charge (mL) | | 620 |
| Refrigerant Oil | | VG74 |
| Outdoor Air Flow (Max) (CFM) | | 1765.8 |
| Outdoor Noise Level (dBA) | | 56.5 |
| Dimension (W×D×H) | inch | 35.04 x 13.46 x 26.50 |
| | mm | 890.0 x 342.0 x 673.0 |
| Package (W×D×H) | inch | 39.17 x 15.67 x 29.13 |
| | mm | 995 x 398 x 740 |
| Net/Gross Weight | lbs | 101.41/109.13 |
| | kg | 46/49.5 |

| EFFICIENCY RATINGS | | | |
|--------------------|------|---------|------|
| Cooling | | Heating | |
| SEER2 | 19.0 | HSPF2-4 | 10.1 |
| EER2 | 12.5 | COP | 3.60 |

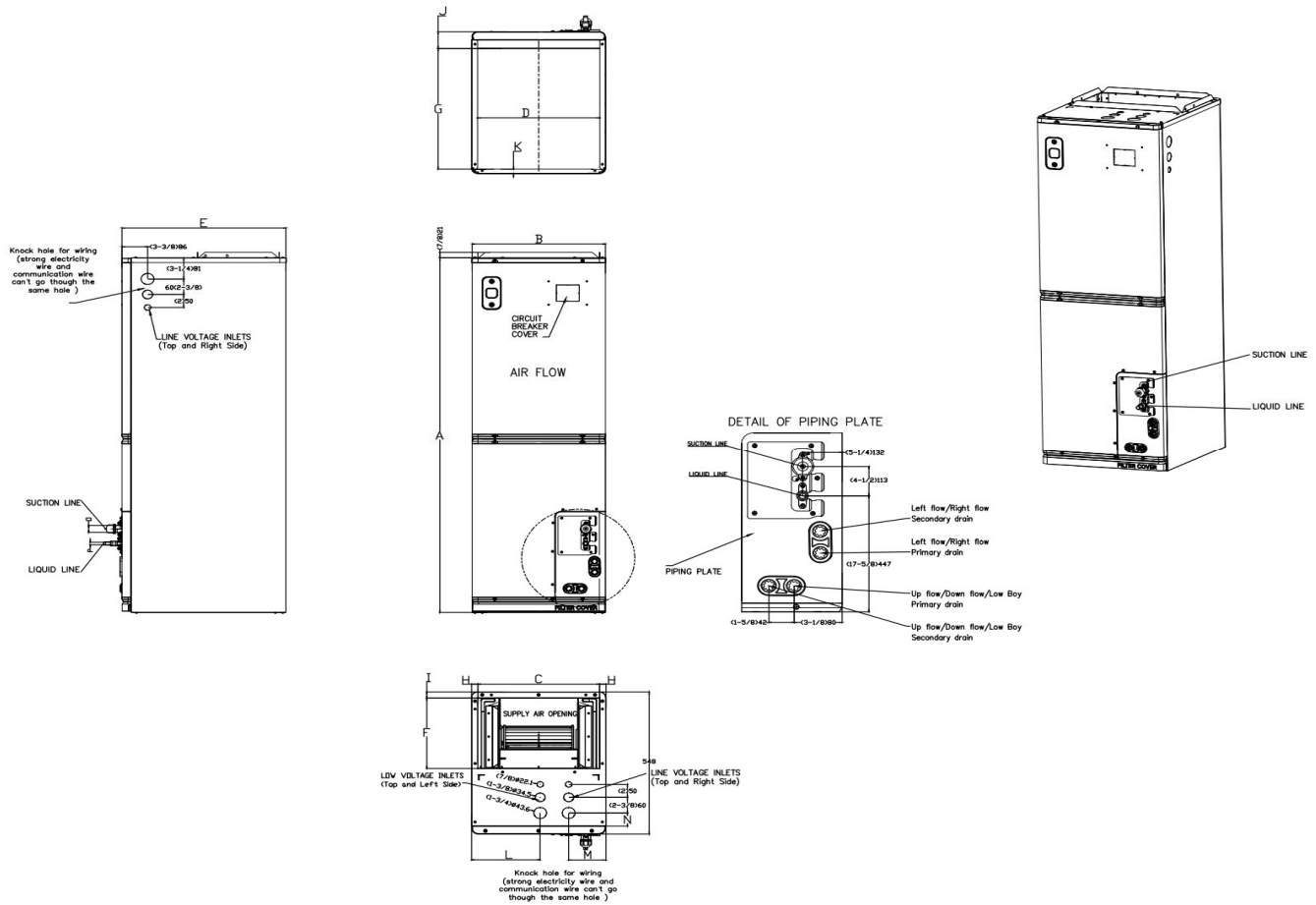
| COOLING PERFORMANCE | |
|----------------------------------|---|
| Cooling (Btu/hr) | |
| Rated Capacity | 18000 |
| Min/Max Capacity | 4600~23100 |
| Moisture Removal (L/h) | 1.76 |
| Standard Operating Range (°F/°C) | -22~122 (-30~50) |
| Rated Cooling Conditions: | Indoor: 80°F DB/67°F WB Outdoor: 95°F DB/75°F WB |

| HEATING PERFORMANCE | |
|---|---|
| Heating (Btu/hr) | |
| 1. @ 47°F Rated | 18000 |
| 1. @ 47°F Min/Max Capacity | 5700~23100 |
| 2. @ 17°F Rated | 14700 |
| 3. @ 5°F Rated: Capacity / COP | 18600/2.12 |
| 3. @ 5°F Max: Capacity | 18600 |
| Standard Operating Range (°F/°C) | -22~75 (-30~24) |
| 1. Rated Heating Conditions: | Indoor: 70°F DB/60°F WB Outdoor: 47°F DB/43°F WB |
| 2. Rated Heating Conditions: | Indoor: 70°F DB/60°F WB Outdoor: 17°F DB/15°F WB |
| 3. Heating Conditions, Compressor Operating at Max. Frequency | Indoor: 70°F DB/60°F WB Outdoor: 5°F DB/5°F WB |

| ELECTRICAL SPECIFICATIONS | |
|----------------------------------|--|
| Indoor Power Supply | 115/208/230V, 60Hz, 1Ph |
| Indoor MCA 115V / (208/230V) | 5.5/3.5 |
| Indoor MOP | 15 |
| Outdoor Power Supply | 208/230V, 60Hz, 1Ph |
| Outdoor MCA | 17 |
| Outdoor MOP | 20 |
| Communication Wiring | AWG 20-2 |
| Compressor RLA | 12 |
| Outdoor Fan Motor RLA | 0.9 |
| Outdoor Fan Motor W | 80 |
| Indoor Fan Motor RLA | 2 |
| Indoor Fan Motor W | N/A |
| System Power Input @ Cooling (W) | 1440 (530 ~ 2020) |
| System Power Input @ Heating (W) | 1465 (410 ~ 1900) |
| MCA: Min. circuit amps (A) | MOCP: Max. over current protection (A) |
| RLA: Rated load amps (A) | W: Fan motor rated output (W) |

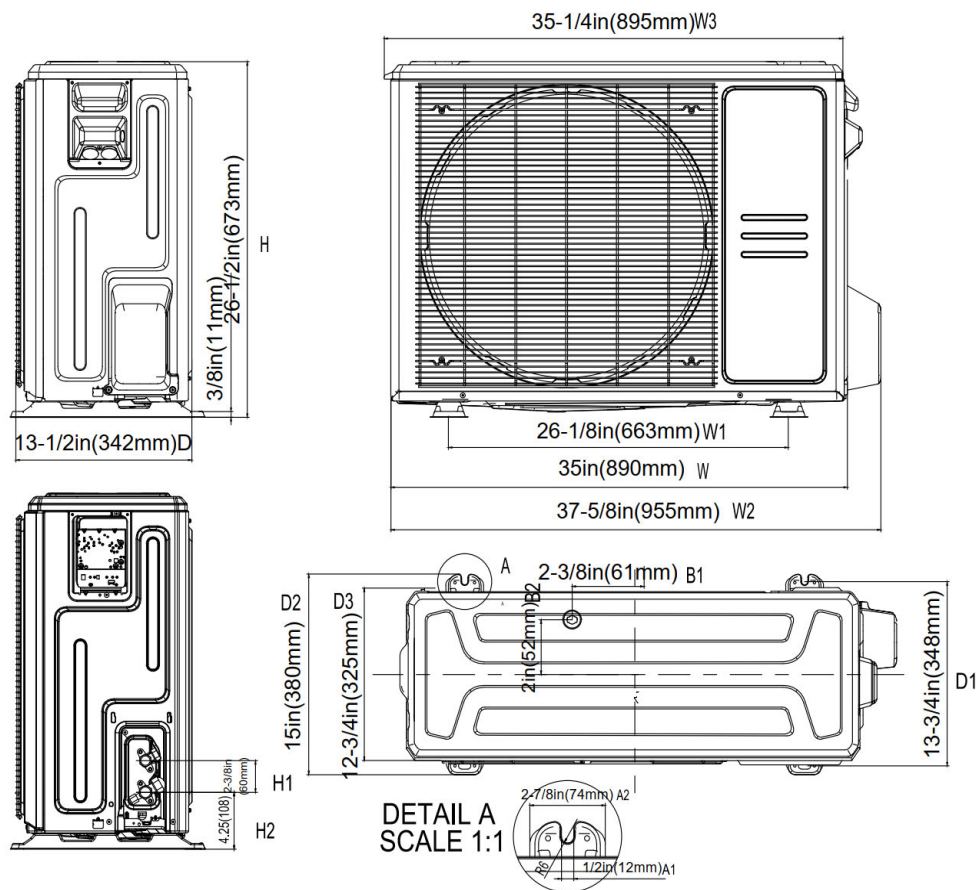
| REFRIGERANT PIPING SPECIFICATIONS | |
|--|----------------|
| Throttle type (Indoor) | EXV |
| Throttle type (Outdoor) | EXV |
| Liquid Size | 9.52mm (3/8in) |
| Gas Size | 19mm (3/4in) |
| Max. Piping Length (ft/m) | 164 (50) |
| Max. Height Difference (ft/m) | 82 (25) |
| Max. Pre-charged Length (ft/m) | 24.6 (7.5) |
| Refrigerant Pre-charged Amount (oz/kg) | 74.08 (2.1) |
| Additional Charge of Refrigerant ((oz/ft)/(g/m)) | 0.7 (65) |
| Connection Method | Flared |

Indoor Unit Dimensions

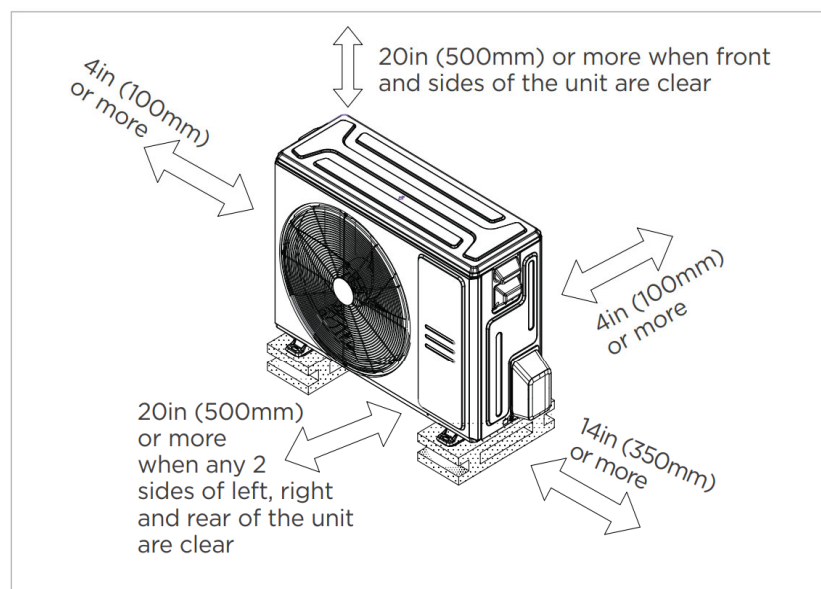


| Model(Btu/h) | | 18K/24K | | 30K/36K | | 48K/54K | |
|--------------|--|---------|------|---------|------|---------|------|
| Dimensions | | inch | mm | inch | mm | inch | mm |
| A | Model Height | 49-3/4 | 1263 | 54 | 1371 | 56 | 1421 |
| B | Model Width | 14-1/2 | 368 | 17-1/2 | 445 | 21-1/2 | 546 |
| C | Supply Air Opening Width | 12-7/8 | 328 | 16 | 405 | 19-7/8 | 506 |
| D | Return Air Opening Width | 13 | 331 | 16 | 407 | 20 | 509 |
| E | Model Depth | 21-1/2 | 546 | 21-1/2 | 546 | 21-1/2 | 546 |
| F | Supply Air Opening Depth | 10-5/8 | 271 | 10-5/8 | 271 | 10-5/8 | 271 |
| G | Return Air Opening Depth | 18-1/4 | 465 | 18-1/4 | 465 | 18-1/4 | 465 |
| H | Supply Air Opening Clearance | 7/8 | 22 | 7/8 | 22 | 7/8 | 22 |
| I | Supply Air Opening Clearance | 1 | 24 | 1 | 24 | 1 | 24 |
| J | Return Air Opening Front Clearance | 2-1/2 | 65 | 2-1/2 | 65 | 2-1/2 | 65 |
| K | Return Air Opening Back Clearance | 3/4 | 18 | 3/4 | 18 | 3/4 | 18 |
| L | Top cover knock hole | / | / | 9 | 229 | 10-7/8 | 275 |
| M | Top cover knock hole | 4-1/2 | 113 | 4-7/8 | 124 | 5-1/8 | 131 |
| N | Top cover knock hole | 2 | 51 | 2 | 51 | 1-5/8 | 41 |
| O | Refrigerant piping flareconnection(gas) | 3/4 | 19 | 3/4 | 19 | 3/4 | 19 |
| P | Refrigerant piping flareconnection(liquid) | 3/8 | 9 | 3/8 | 9 | 3/8 | 9 |

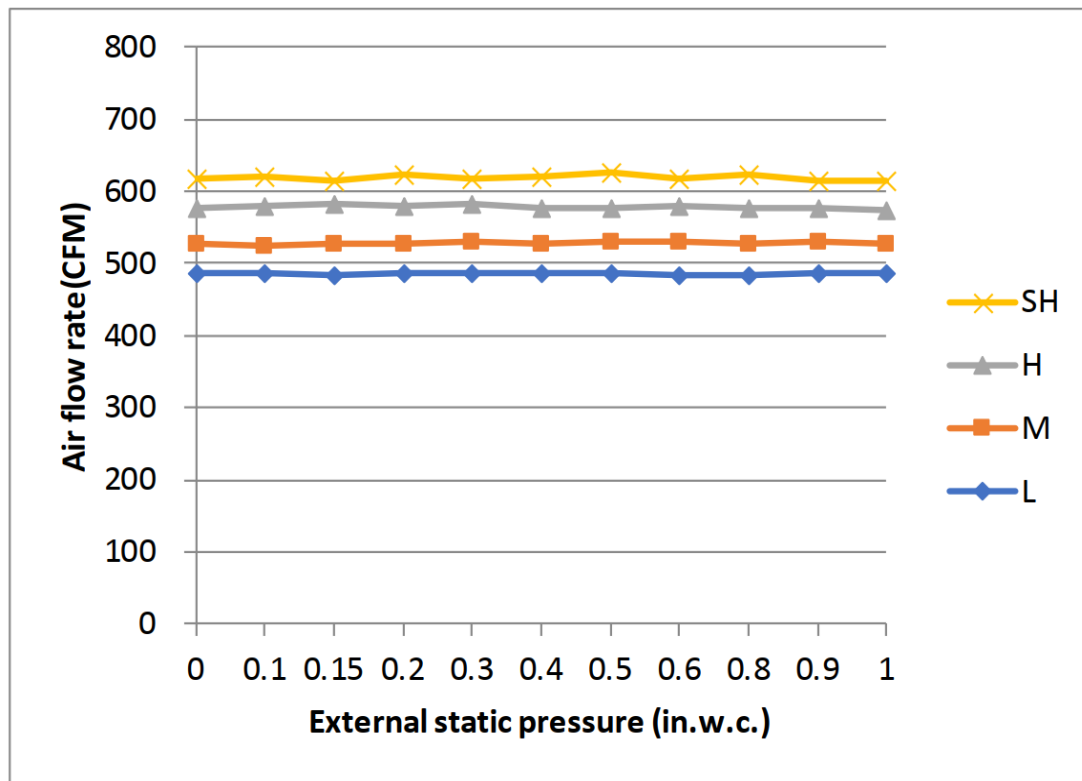
Outdoor Unit Dimensions



Installation Instruction For Outdoor Unit



☒ Meets all spatial requirements shown in Installation Clearance Requirements above.



Features

- Multi-position installation: horizontal (left or right), vertical (up or down)
- 115/230V voltage compatible for IDU
- Aluminum Coil
- Constantly Air Flow system up to 1.0 In.W.G
- Optional Auxiliary heat kit up to 25kW
- Easy Maintenance
- Multiple control options available:
 - Two way communication wired controller: 120N (X6)
 - Two way communication wired controller with built-in WiFi: 120N (X6W)
 - Wireless remote controller
 - Third-Party 24V Thermostat
- Adaptive Control System
- High efficiency up to 19 SEER2, 12.5 EER2, 10.8 HSPF2
- 100% heat output at -13F*
- Chassis heater and crankcase heater equipped as standard

* For ACiQ-36-PAH pairing with ACiQ-36-HPD, rated cooling capacity/heating capacity at -13F=100%