



Submittal Data Sheet

Indoor Unit Model#: ACiQ-36-AHD

Outdoor Unit Model#: ACiQ-36-HPD

Air Handler Heat Pump System

| | |
|---------------|---------------|
| Location: | Approval: |
| Engineer: | Date: |
| Submitted to: | Construction: |
| Submitted by: | Unit #: |
| Reference: | Drawing #: |



INDOOR UNIT SPECIFICATIONS

| | | |
|---|------|---------------------------------------|
| ESP (in.W.G) | | 0-0.8 |
| Indoor Air Flow (Turbo/H/M/L/Si) (CFM) | | 1189.0 / 1083.0 / 971.2 / 865.2 / N/A |
| Indoor Noise Level (Turbo/H/M/L/Si) (dBA) | | 49 / 48.0 / 45.5 / 25.5 / N/A |
| Dimension (WxDxH) | inch | 21.02 x 21.02 x 49.02 |
| | mm | 534.0 x 534.0 x 1245.0 |
| Package (WxDxH) | inch | 26.57 x 24.41 x 52.56 |
| | mm | 675 x 620 x 1335 |
| Net/Gross Weight | lbs | 129.41 / 153.88 |
| | kg | 58.7 / 69.8 |

OUTDOOR UNIT SPECIFICATIONS

| | | |
|------------------------------|------|-----------------------|
| Compressor Type | | TWIN-ROTARY |
| Compressor Model | | EKPQ420D1UMUA |
| Refrigerant | | R454B |
| Refrigerant Oil Charge (mL) | | 1460 |
| Refrigerant Oil | | VG75 |
| Outdoor Air Flow (Max) (CFM) | | 3001.8 |
| Outdoor Noise Level (dBA) | | 62.5 |
| Dimension (WxDxH) | inch | 38.58 x 16.34 x 38.39 |
| | mm | 980.0 x 415.0 x 975.0 |
| Package (WxDxH) | inch | 45.08 x 19.68 x 42.52 |
| | mm | 1145 x 500 x 1080 |
| Net/Gross Weight | lbs | 204.15 / 235.23 |
| | kg | 92.6 / 106.7 |

EFFICIENCY RATINGS

| Cooling | | Heating | |
|---------|------|---------|------|
| SEER2 | 17.4 | HSPF2-4 | 10.2 |
| EER2 | 11.7 | COP | 3.60 |

COOLING PERFORMANCE

| Cooling (Btu/hr) | |
|----------------------------------|------------------|
| Rated Capacity | 36000 |
| Min/Max Capacity | 9700~42000 |
| Moisture Removal (L/h) | 3.4 |
| Standard Operating Range °F (°C) | -22~122 (-30~50) |
| Rated Cooling Conditions: | |
| Indoor: 80°F DB/67°F WB | |
| Outdoor: 95°F DB/75°F WB | |

HEATING PERFORMANCE

| Heating (Btu/hr) | |
|---|-----------------|
| 1. @ 47°F Rated | 37000 |
| 1. @ 47°F Min/Max Capacity | 11000~48000 |
| 2. @ 17°F Rated | 31800 |
| 3. @ 5°F Rated: Capacity / COP | 39000 / 1.9 |
| 3. @ 5°F Max: Capacity | 39000 |
| Standard Operating Range °F (°C) | -22~75 (-30~24) |
| 1. Rated Heating Conditions: | |
| Indoor: 70°F DB/60°F WB | |
| Outdoor: 47°F DB/43°F WB | |
| 2. Rated Heating Conditions: | |
| Indoor: 70°F DB/60°F WB | |
| Outdoor: 17°F DB/15°F WB | |
| 3. Heating Conditions, Compressor Operating at Max. Frequency | |
| Indoor: 70°F DB/60°F WB | |
| Outdoor: 5°F DB/5°F WB | |

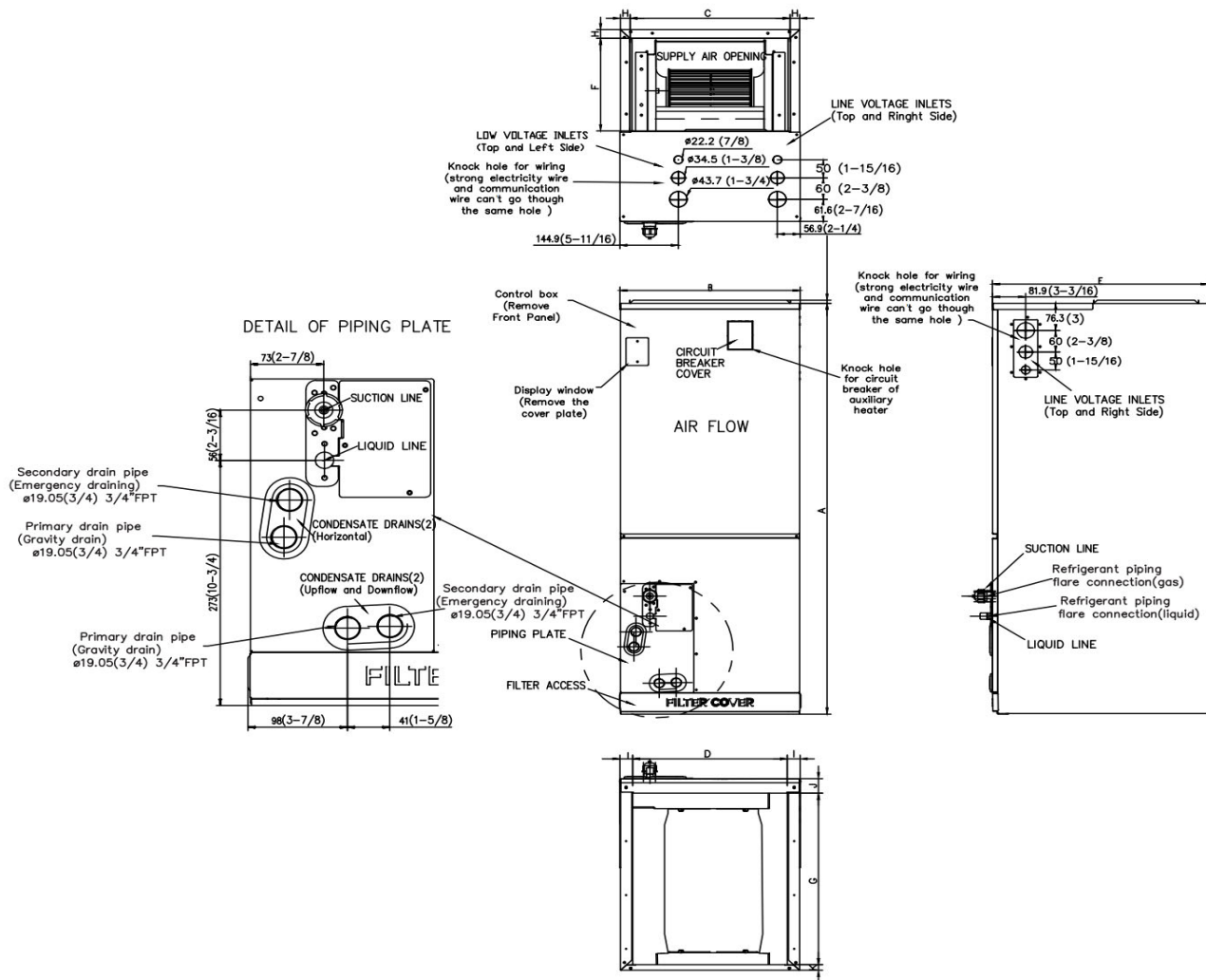
ELECTRICAL SPECIFICATIONS

| | |
|----------------------------------|--|
| Indoor Power Supply | 115/208/230V, 60Hz, 1Ph |
| Indoor MCA 115V / (208/230V) | 8.0 / 6.0 |
| Indoor MOP | 15 |
| Outdoor Power Supply | 208/230V, 60Hz, 1Ph |
| Outdoor MCA | 32 |
| Outdoor MOP | 35 |
| Communication Wiring | AWG 20-2 |
| Compressor RLA | 23 |
| Outdoor Fan Motor RLA | 2 |
| Outdoor Fan Motor W | 250 |
| Indoor Fan Motor RLA | 4.5 |
| Indoor Fan Motor W | 375 |
| System Power Input @ Cooling (W) | 3076 (820 ~ 4440) |
| System Power Input @ Heating (W) | 3012 (665 ~ 4370) |
| MCA: Min. circuit amps (A) | MOCP: Max. over current protection (A) |
| RLA: Rated load amps (A) | W: Fan motor rated output (W) |

REFRIGERANT PIPING SPECIFICATIONS

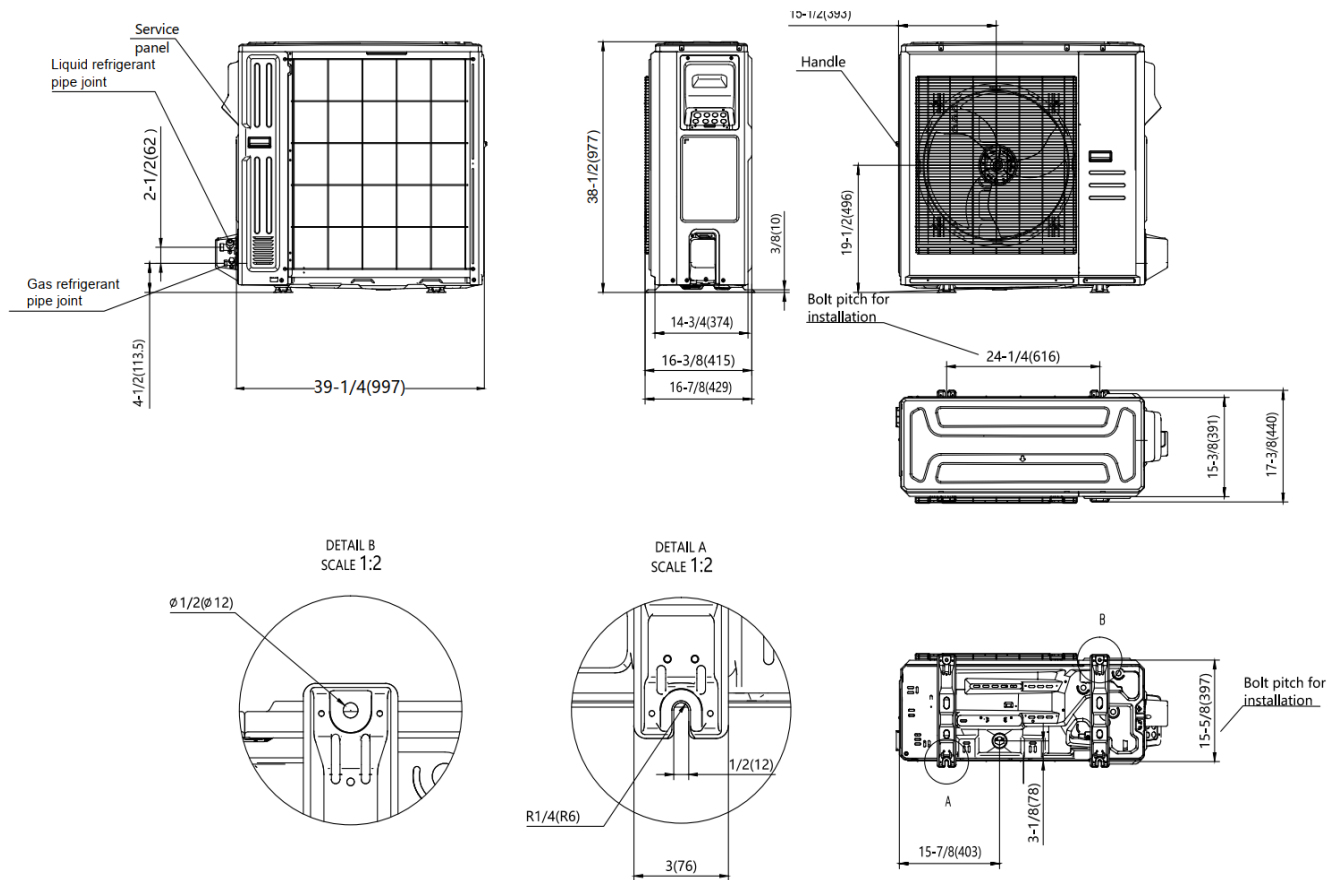
| | |
|---|----------------|
| Throttle type (Indoor) | EXV |
| Throttle type (Outdoor) | EXV |
| Liquid Size | 9.52mm (3/8in) |
| Gas Size | 19mm (3/4in) |
| Max. Piping Length (ft/m) | 246 / 75 |
| Max. Height Difference (ft/m) | 98.4 / 30 |
| Max. Pre-charged Length (ft/m) | 24.6 / 7.5 |
| Refrigerant Pre-charged Amount (oz/kg) | 126.99 / 3.6 |
| Additional Refrigerant Charge (oz/ft) / (g/m) | 0.7 / 65 |
| Connection Method | Flared |

Indoor Unit Dimensions

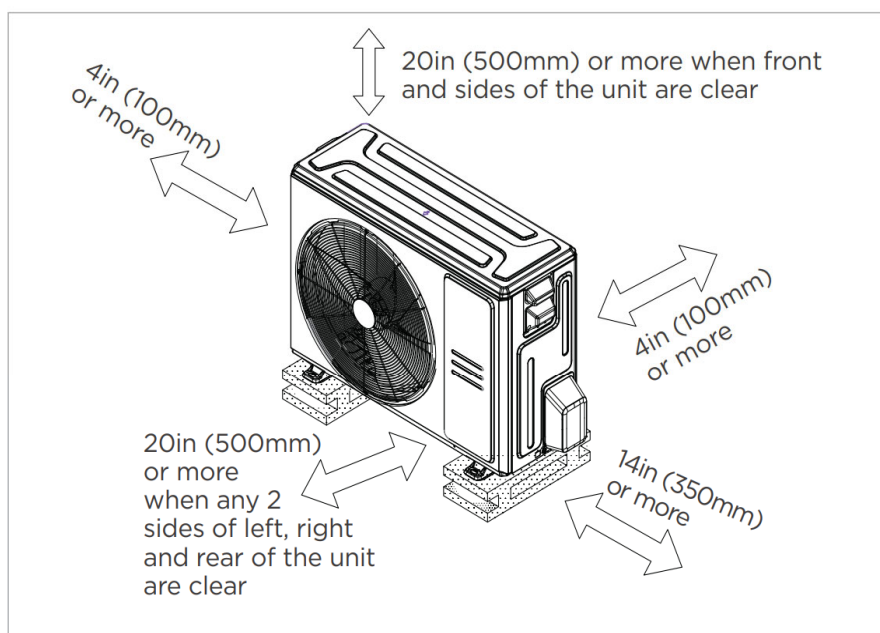


| Dimensions | Model | 18k/24k | | 30k/36k | | 42k/48k/60k | |
|------------|------------------------------------|---------|------|---------|------|-------------|------|
| | | inch | mm | inch | mm | inch | mm |
| A | Model Height | 45 | 1143 | 49 | 1245 | 53 | 1346 |
| B | Model Width | 17-1/2 | 445 | 21 | 534 | 24-1/2 | 622 |
| C | Supply Air Opening Width | 15-5/8 | 397 | 19-1/8 | 486 | 22-5/8 | 575 |
| D | Return Air Opening Width | 15-1/8 | 384 | 18-5/8 | 473 | 22-1/8 | 562 |
| E | Model Depth | 21 | 534 | 21 | 534 | 21 | 534 |
| F | Supply Air Opening Depth | 10-1/4 | 260 | 10-1/4 | 260 | 10-1/4 | 260 |
| G | Return Air Opening Depth | 18-3/4 | 476 | 18-3/4 | 476 | 18-3/4 | 476 |
| H | Supply Air Opening Clearance | 15/16 | 24 | 15/16 | 24 | 15/16 | 24 |
| I | Return Air Opening Side Clearance | 1-1/4 | 32 | 1-1/4 | 32 | 1-1/8 | 28 |
| J | Return Air Opening Front Clearance | 1-1/2 | 38 | 1-5/8 | 41 | 1-5/8 | 41 |
| K | Return Air Opening Back Clearance | 5/8 | 16 | 5/8 | 16 | 3/4 | 19 |

Outdoor Unit Dimensions

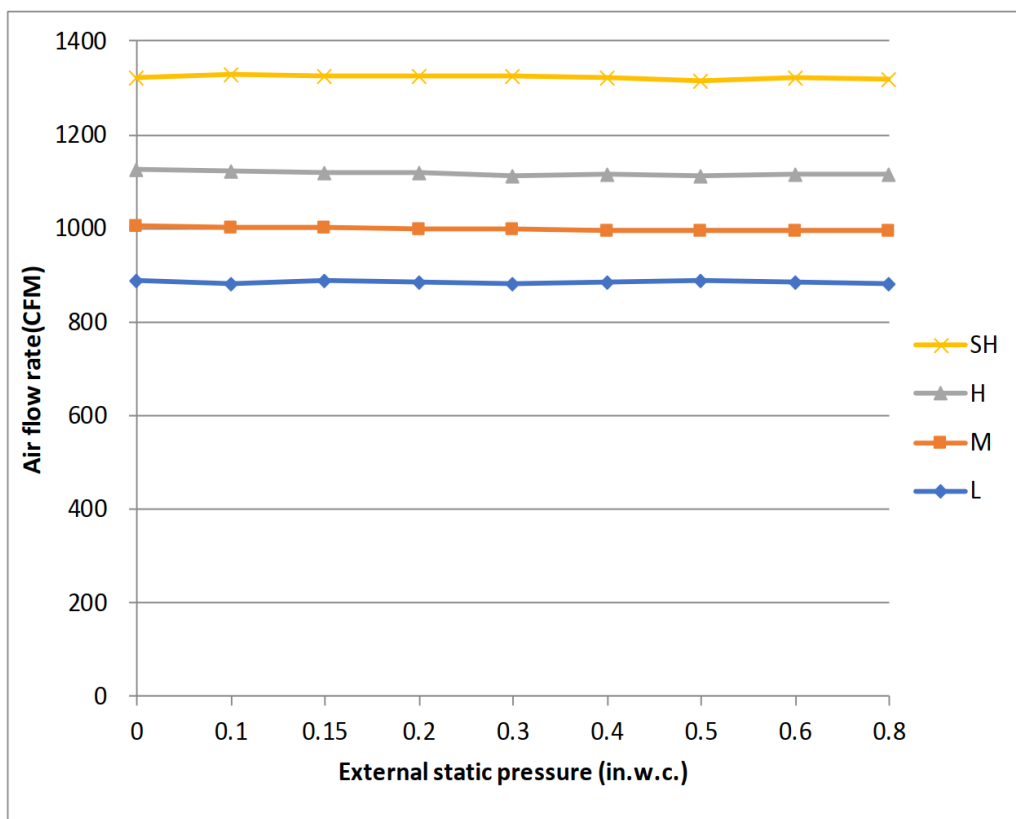


Installation Instructions For Outdoor Unit



Meets all spatial requirements shown in Installation Clearance Requirements above.

Fan Performance For Indoor Unit



Features

- Multi-position installation: horizontal (left or right), vertical (up or down)
- Aluminum Coil
- Constantly Air Flow system up to 0.80 In.W.G
- 1 inch R4.2 fiberglass free insulation reduces condensation and boosts efficiency (optional)
- Optional Auxiliary heat kit up to 25kW
- Easy Maintenance
- Multiple control options available:
 - Two way communication wired controller:120N(X6)
 - Two way communication wired controller with built-in WiFi:120N(X6W)
 - Wireless remote controller
 - Third-Party 24V Thermostat
- Adaptive Control System
- High efficiency up to 19 SEER2, 12.5 EER2, 10.3 HSPF2
- 100% heat output at -4F*
- Chassis heater and crankcase heater equipped as standard

* For 36K model, rated cooling capacity/heating capacity at -4F=100%